

# Mississippi

Energy Efficiency Jobs in America

15,031  
Total Jobs

## What are EE jobs?

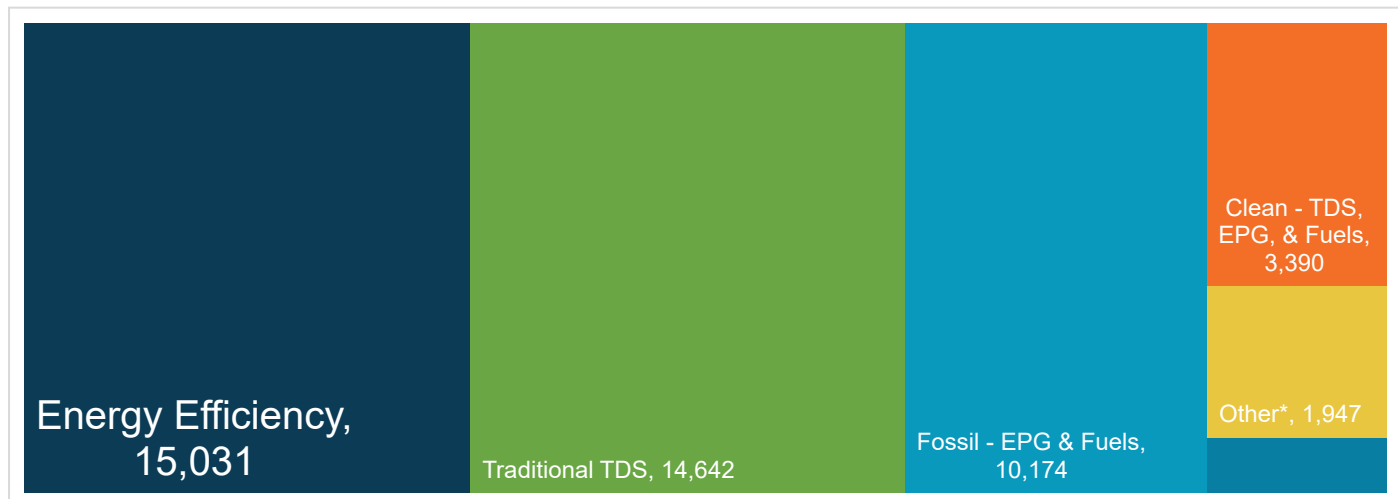
*Jobs that deliver goods and services that lower energy use by improving energy efficiency with a focus on appliances, buildings, data systems, financing, new technologies, and more.*

## What do EE workers do?

- **Manufacture and install** high-efficiency systems, controls, windows, insulation, and ENERGY STAR-certified appliances and products in existing and new homes, commercial and industrial buildings.
- **Design and construct** high-performance buildings such as those earning nationally recognized sustainability and environmental performance ratings.
- **Upgrade and repair** heating, air conditioning, and ventilation (HVAC) and water heating equipment.
- **Educate** property owners and managers on building improvements to unlock savings for businesses, homeowners, schools, states, municipalities, military bases, and more.
- **Analyze building data** using software to maximize energy savings through targeted performance improvements and behavioral changes.
- **Review and approve loans** to finance energy savings performance contracts to improve the comfort, health, and operational costs of buildings.

## How does EE compare in Mississippi?

*Energy efficiency is the largest energy sector in Mississippi.*



TDS = Transmission, Distribution & Storage

EPG = Electric Power Generation

Nuclear (EPG & Fuels) = 718

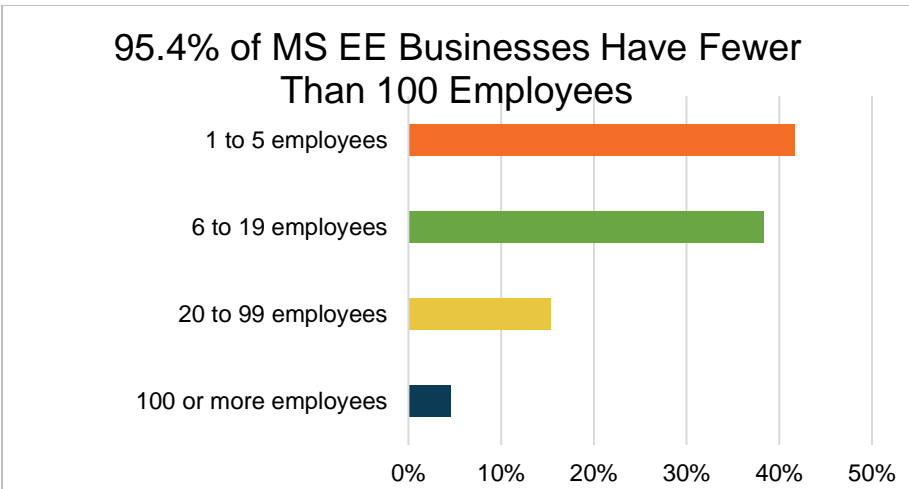
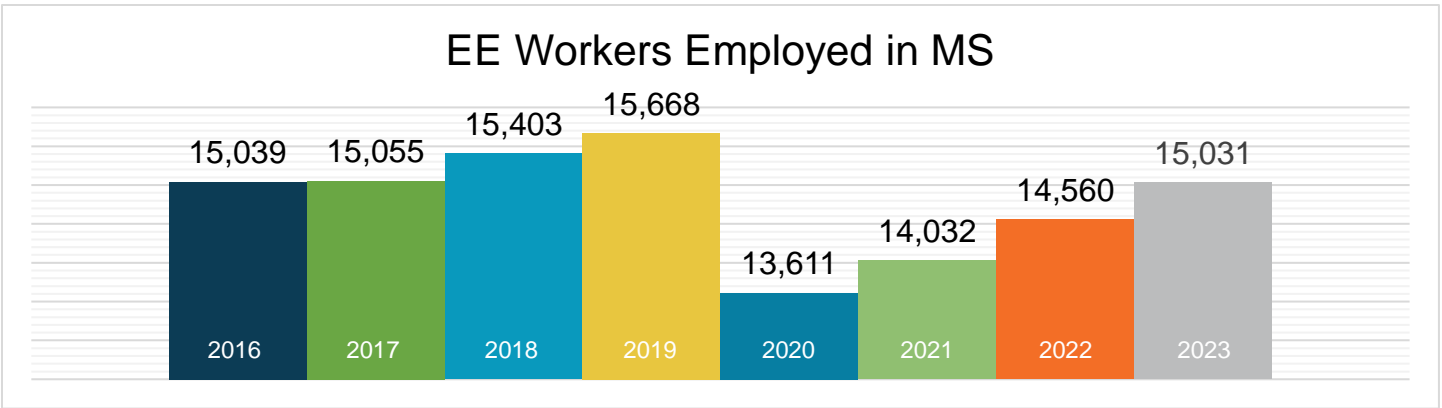
\*Includes other energy subsectors such as corn ethanol, woody biomass, large hydropower, and others.

Presented by:



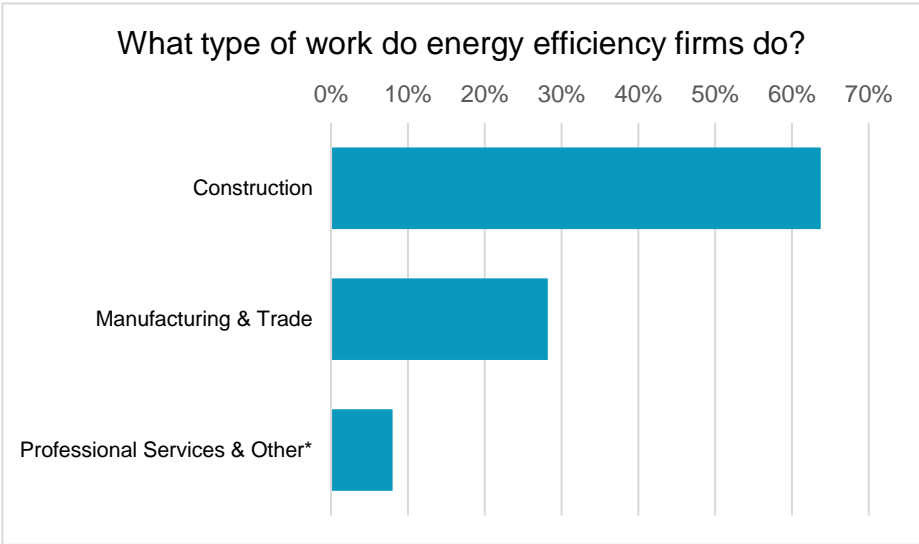
**E4** THE FUTURE

# What does EE look like in Mississippi?



**2,795**  
EE businesses in Mississippi

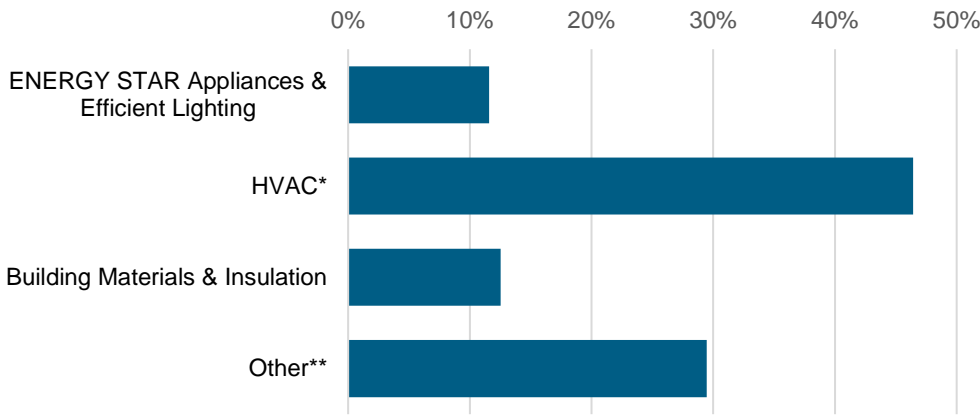
EE construction workers comprise **19%** of Mississippi's construction workforce



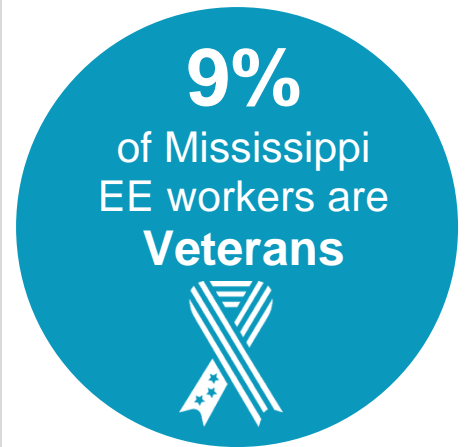
\*Professional services include finance/accounting, architecture, engineering, R&D, etc. and other includes maintenance, and business, and nonprofit organizations.



### What energy efficiency sectors employ the most workers?



\*Heating, ventilation, air conditioning of higher than standard efficiency/renewable heating & cooling  
 \*\*Other such as energy audits, building certifications, and software services

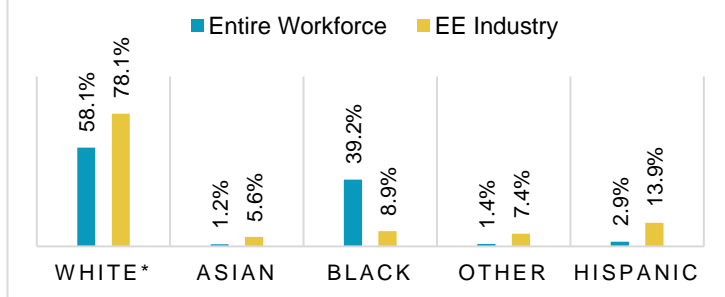


## How is EE doing on diversity in Mississippi?

Demographic data is critical to measure progress in expanding the diversity of the EE industry. A more inclusive industry that reflects the communities it serves is a stronger one that better meets the needs of all U.S. residents. Promoting diversity in hiring is key to maintaining a future workforce of qualified professionals and ensuring all Mississippi communities are represented in the EE sector.

The EE industry needs to do more to prioritize minorities and women for training and support that enables access to employment at Mississippi businesses.

### Mississippi EE Industry by Race and Ethnicity



\*Includes non-Hispanic and Hispanic whites.

### Gender in the Mississippi EE Workforce

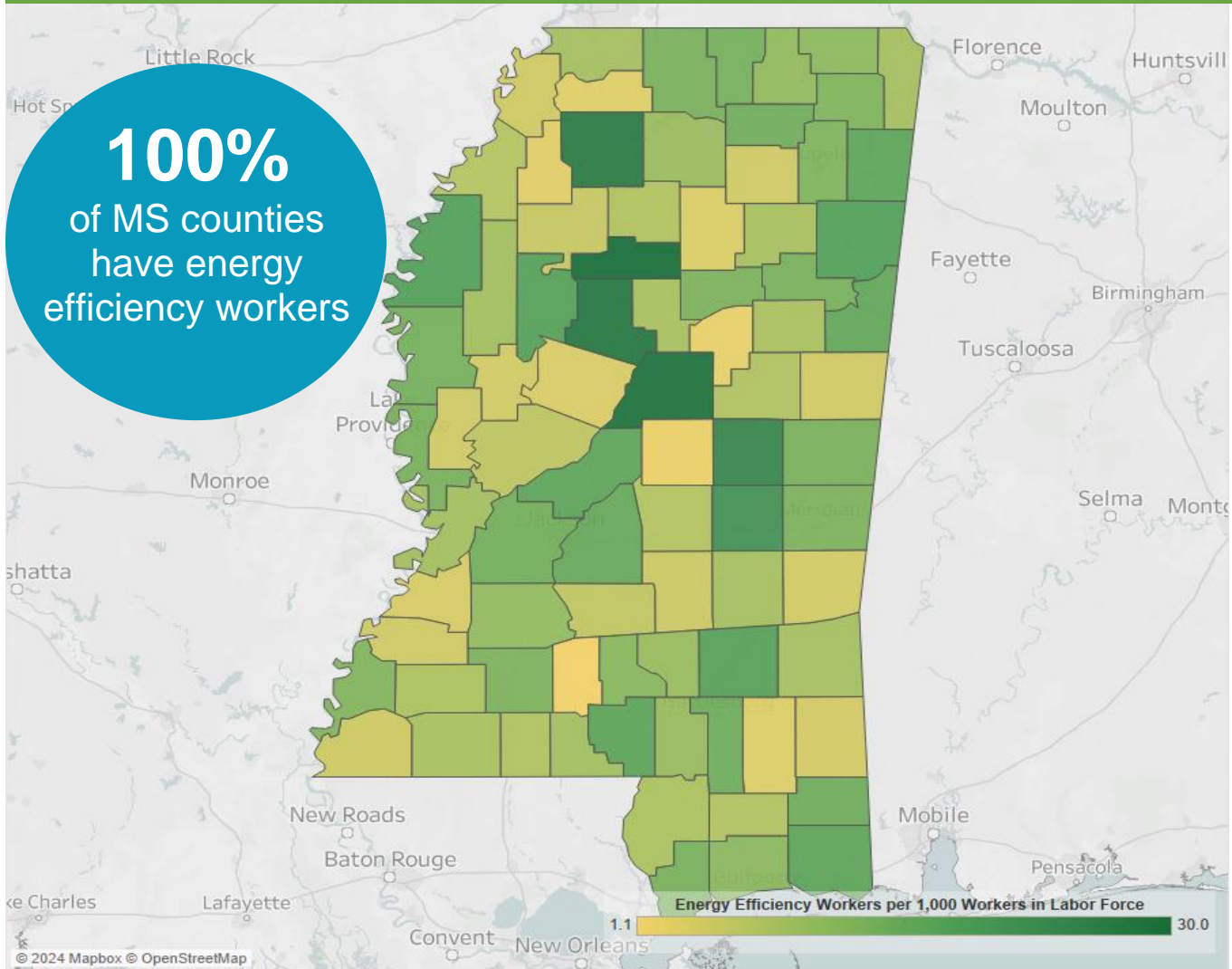


Note: The U.S. Bureau of Labor Statistics (BLS) only includes two genders in their survey. Non-binary gender data is missing from this document due to this limitation.



# Energy Efficiency Jobs are Everywhere

## EE Jobs by County



The energy efficiency job concentration displayed above is capped at thirty jobs per thousand in order to maintain observable differences between the majority of counties within the state. This is done to eliminate the influence outliers have on overall color gradient. For a full list of energy efficiency jobs by county, please visit the Department of Energy's (DOE) United States Energy and Employment Report (USEER) County-Level data site at <https://www.energy.gov/media/330956>.

Congressional		Metropolitan Areas	
District	Jobs	Area	Jobs
1	3,808	Gulfport-Biloxi-Pascagoula	2,046
2	4,382	Hattiesburg	793
3	3,291	Jackson	3,683
4	3,550	Memphis	855
		Rural	7,654

## State Senate

District	Jobs	District	Jobs	District	Jobs	District	Jobs
1	833	15	236	29	540	43	174
2	<10	16	449	30	191	44	58
3	627	17	31	31	210	45	88
4	239	18	236	32	377	46	749
5	95	19	<10	33	119	47	535
6	253	20	724	34	1,115	48	611
7	246	21	468	35	140	49	115
8	139	22	231	36	354	50	72
9	400	23	263	37	420	51	398
10	137	24	11	38	43	52	<10
11	157	25	637	39	65		
12	340	26	484	40	411		
13	86	27	<10	41	86		
14	486	28	210	42	121		

## State House of Representatives

District	Jobs	District	Jobs	District	Jobs	District	Jobs
1	168	32	137	63	130	94	211
2	<10	33	<10	64	276	95	668
3	99	34	48	65	145	96	158
4	66	35	232	66	163	97	<10
5	494	36	84	67	<10	98	<10
6	284	37	599	68	291	99	30
7	206	38	<10	69	<10	100	<10
8	39	39	17	70	118	101	<10
9	240	40	<10	71	<10	102	<10
10	71	41	<10	72	<10	103	<10
11	13	42	<10	73	<10	104	<10
12	<10	43	<10	74	<10	105	131
13	86	44	46	75	78	106	<10
14	19	45	401	76	90	107	<10
15	94	46	35	77	91	108	<10
16	470	47	51	78	59	109	222
17	<10	48	<10	79	213	110	173
18	86	49	140	80	270	111	322
19	66	50	22	81	81	112	<10
20	113	51	<10	82	<10	113	<10
21	20	52	<10	83	<10	114	200
22	45	53	433	84	<10	115	315
23	193	54	264	85	25	116	<10
24	256	55	<10	86	38	117	386
25	29	56	834	87	777	118	<10
26	11	57	<10	88	201	119	87
27	248	58	352	89	<10	120	<10
28	<10	59	527	90	97	121	<10
29	118	60	273	91	28	122	44
30	12	61	<10	92	<10		
31	159	62	175	93	313		





The Building Performance Association (BPA) is a 501(c) 6 nonprofit industry association that serves as the hub for businesses, nonprofits, and government agencies working to make America's homes more comfortable, healthy, and energy efficient. Our mission is to transform the market for the home performance industry through advocacy, education, professional development, and networking. Visit [www.building-performance.org](http://www.building-performance.org)



E4TheFuture is dedicated to bringing clean, efficient energy home for every American and promotes energy solutions to advance climate protection and economic fairness. Visit [www.E4TheFuture.org](http://www.E4TheFuture.org).



BW Research Partnership is a full-service, economic and workforce research consulting firm with offices in Carlsbad, California and Wrentham, Massachusetts. It is the nation's leading provider of accurate, comprehensive energy and clean energy research studies. Visit [www.bwresearch.com](http://www.bwresearch.com).

Data Source: Unless otherwise stated, all data are from the U.S. Energy and Employment Report, August 2024, by the U.S. Department of Energy (see Appendix B for methodology details). This methodology — adopted by the U.S. Dept. of Energy for its 2017 U.S. Energy and Employment Report, approved by the Office of Management and Budget and grounded on data collected by the Bureau of Labor Statistics — provides the broadly accepted best accounting of all U.S. energy workers.

For questions on BPA analyses please email: [communications@building-performance.org](mailto:communications@building-performance.org)

