

Indiana

Energy Efficiency Jobs in America

51,790
Total Jobs



What are EE jobs?

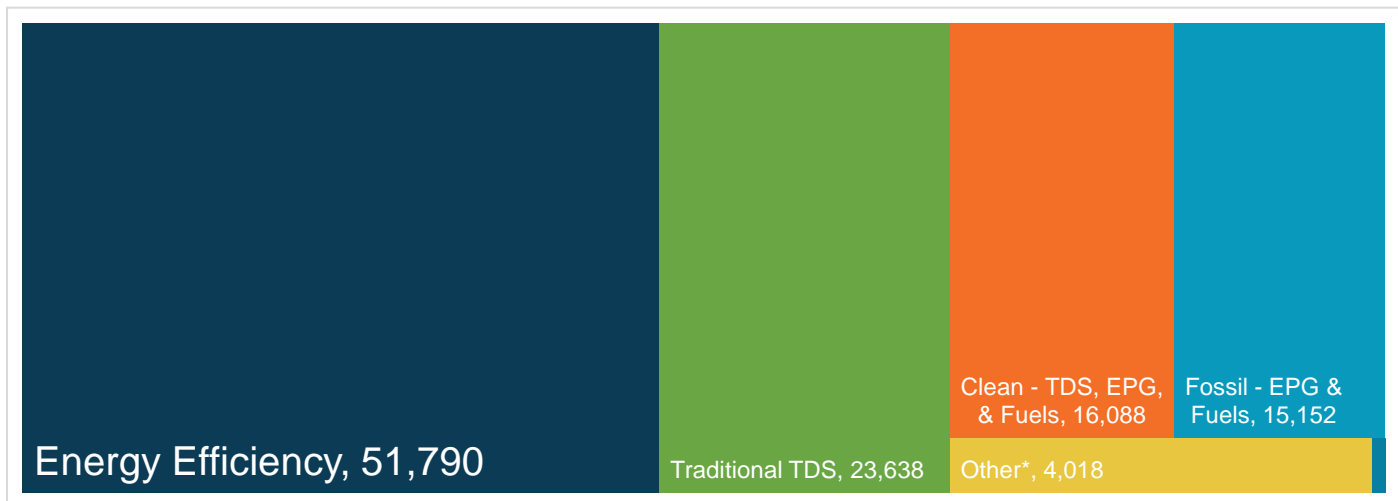
Jobs that deliver goods and services that lower energy use by improving energy efficiency with a focus on appliances, buildings, data systems, financing, new technologies, and more.

What do EE workers do?

- **Manufacture and install** high-efficiency systems, controls, windows, insulation, and ENERGY STAR-certified appliances and products in existing and new homes, commercial and industrial buildings.
- **Design and construct** high-performance buildings such as those earning nationally recognized sustainability and environmental performance ratings.
- **Upgrade and repair** heating, air conditioning, and ventilation (HVAC) and water heating equipment.
- **Educate** property owners and managers on building improvements to unlock savings for businesses, homeowners, schools, states, municipalities, military bases, and more.
- **Analyze building data** using software to maximize energy savings through targeted performance improvements and behavioral changes.
- **Review and approve loans** to finance energy savings performance contracts to improve the comfort, health, and operational costs of buildings.

How does EE compare in Indiana?

Energy efficiency is the largest energy sector in Indiana.



TDS = Transmission, Distribution & Storage

EPG = Electric Power Generation

Nuclear (EPG & Fuels) = 128

*Includes other energy subsectors such as corn ethanol, woody biomass, large hydropower, and others.

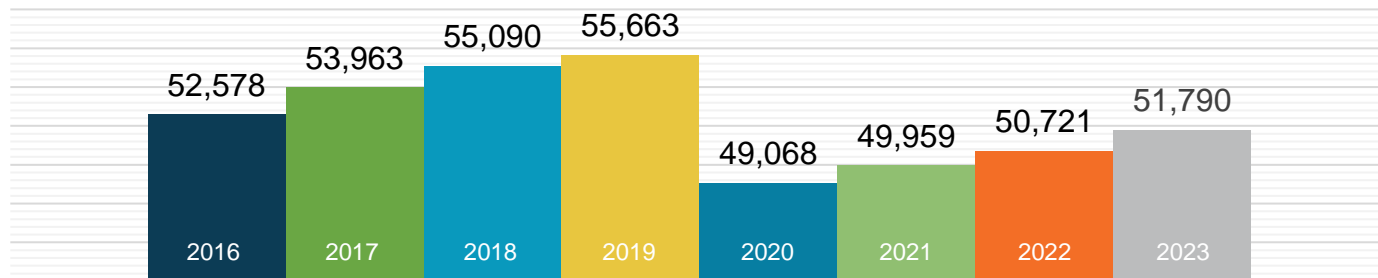
Presented by:



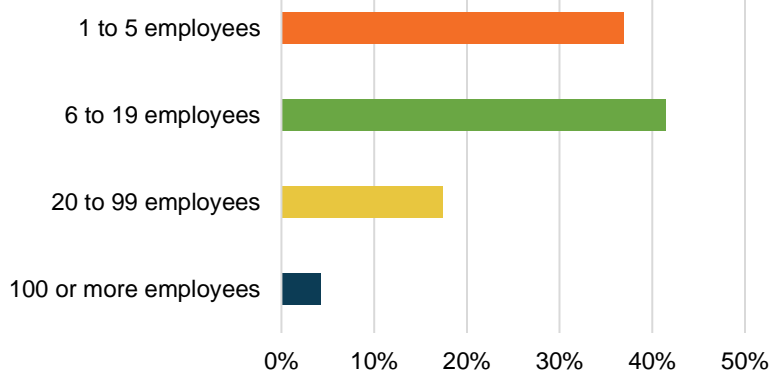
Updated April 2025

What does EE look like in Indiana?

EE Workers Employed in IN



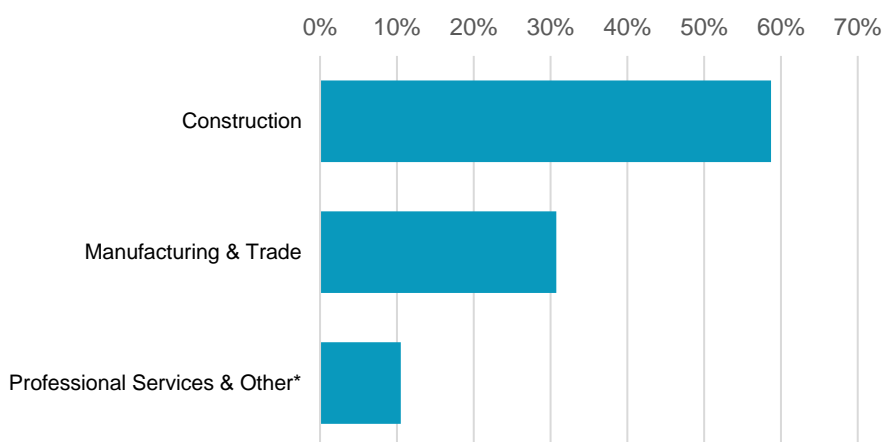
95.8% of IN EE Businesses Have Fewer Than 100 Employees



EE construction
workers comprise
19% of Indiana's
construction workforce

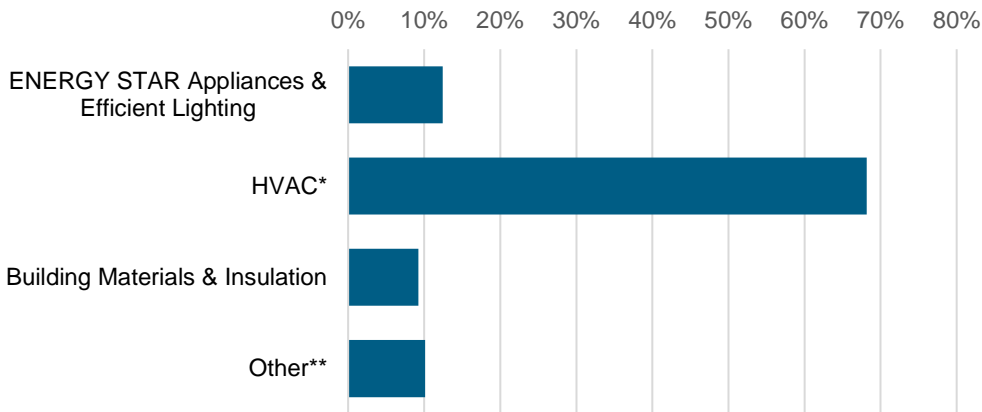


What type of work do energy efficiency firms do?



*Professional services include finance/accounting, architecture, engineering, R&D, etc. and other includes maintenance, and business and nonprofit organizations.

What energy efficiency sectors employ the most workers?



*Heating, ventilation, air conditioning of higher than standard efficiency/renewable heating & cooling
 **Other such as energy audits, building certifications, and software services

10%
 of Indiana
 EE workers are
Veterans

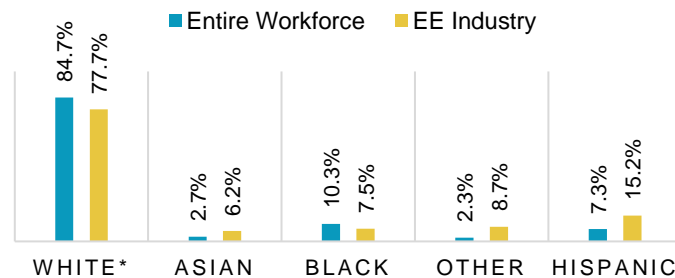


How is EE doing on diversity in Indiana?

Demographic data is critical to measure progress in expanding the diversity of the EE industry. A more inclusive industry that reflects the communities it serves is a stronger one that better meets the needs of all U.S. residents. Promoting diversity in hiring is key to maintaining a future workforce of qualified professionals and ensuring all Indiana communities are represented in the EE sector.

The EE industry needs to do more to prioritize minorities and women for training and support that enables access to employment at Indiana businesses.

Indiana EE Industry by Race and Ethnicity



*Includes non-Hispanic and Hispanic whites.

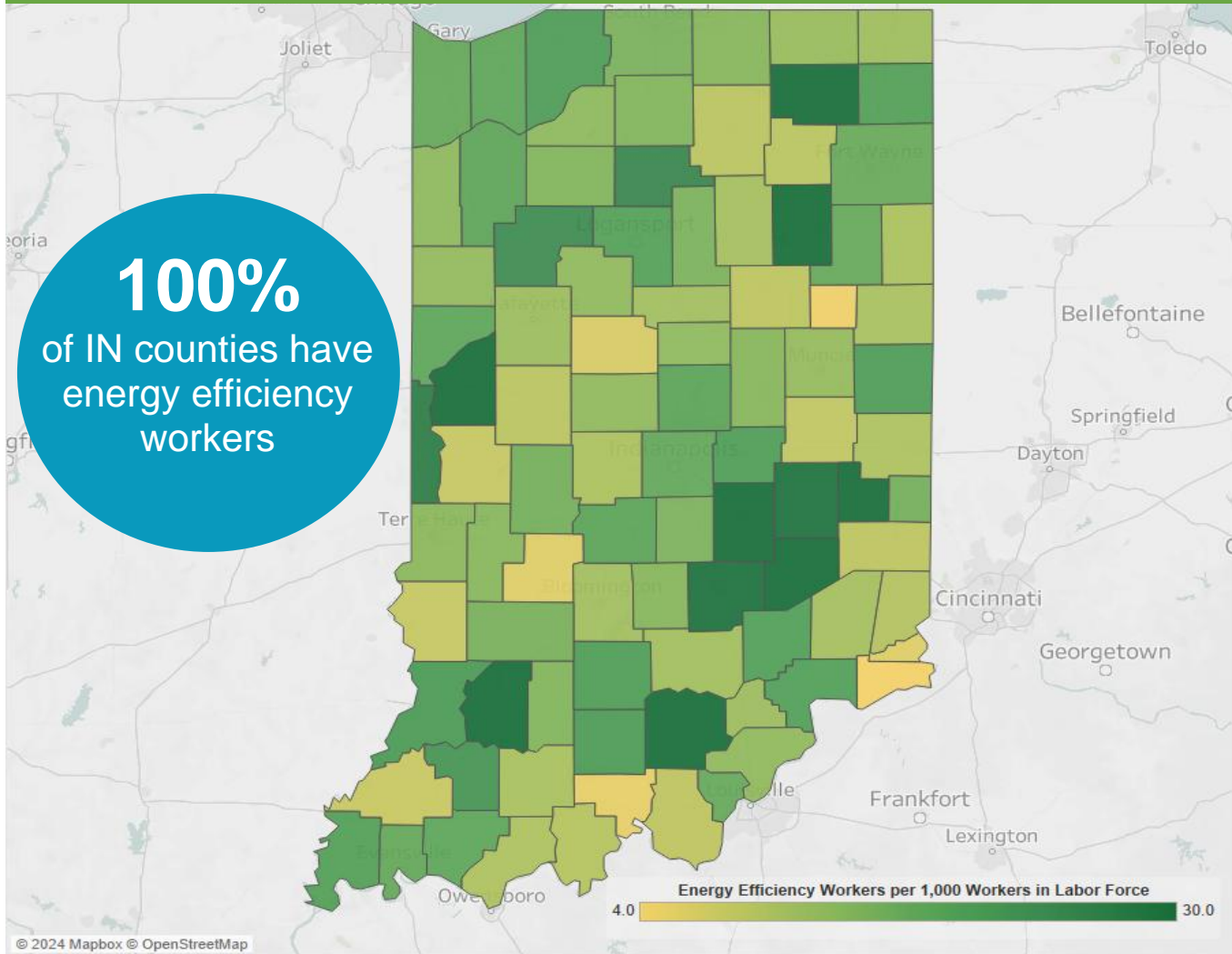
Gender in the Indiana EE Workforce



Note: The U.S. Bureau of Labor Statistics (BLS) only includes two genders in their survey. Non-binary gender data is missing from this document due to this limitation.

Energy Efficiency Jobs are Everywhere

EE Jobs by County



The energy efficiency job concentration displayed above is capped at thirty jobs per thousand in order to maintain observable differences between the majority of counties within the state. This is done to eliminate the influence outliers have on overall color gradient. For a full list of energy efficiency jobs by county, please visit the Department of Energy's (DOE) United States Energy and Employment Report (USEER) County-Level data site at <https://www.energy.gov/media/330956>.

Congressional		Metropolitan Areas					
District	Jobs	Area		Jobs	Area		Jobs
1	5,670	Bloomington		781	Lafayette-West Lafayette		1,187
2	5,627	Chicago-Naperville-Elgin		4,612	Louisville/Jefferson County		1,723
3	6,891	Cincinnati		172	Michigan City-La Porte		821
4	4,301	Columbus		1,476	Muncie		553
5	5,222	Elkhart-Goshen		1,766	South Bend-Mishawaka		1,803
6	6,429	Evansville		2,313	Terre Haute		884
7	6,469	Fort Wayne		3,585	Rural		10,823
8	6,344	Indianapolis-Carmel-Anderson		18,900			
9	4,838	Kokomo		392			

State Senate

District	Jobs		District	Jobs		District	Jobs		District	Jobs
1	1,631		16	1,063		31	273		46	114
2	1,220		17	1,102		32	1,012		47	926
3	182		18	1,702		33	1,894		48	742
4	1,988		19	563		34	<10		49	1,515
5	543		20	2,279		35	771		50	489
6	411		21	421		36	890			
7	2,129		22	81		37	732			
8	898		23	1,098		38	785			
9	2,099		24	1,004		39	1,714			
10	1,328		25	1,059		40	513			
11	609		26	493		41	803			
12	291		27	1,012		42	451			
13	3,072		28	1,586		43	891			
14	1,636		29	1,085		44	295			
15	630		30	2,332		45	1,423			

State House of Representatives

District	Jobs		District	Jobs		District	Jobs		District	Jobs
1	465		28	991		55	539		82	1,956
2	419		29	956		56	446		83	70
3	313		30	382		57	1,301		84	368
4	1,438		31	508		58	<10		85	80
5	993		32	224		59	287		86	811
6	1,089		33	338		60	457		87	220
7	454		34	111		61	218		88	191
8	945		35	206		62	222		89	988
9	<10		36	468		63	577		90	<10
10	370		37	1,010		64	1,089		91	558
11	717		38	47		65	270		92	356
12	424		39	1,099		66	504		93	<10
13	1,266		40	130		67	611		94	49
14	499		41	25		68	97		95	260
15	<10		42	579		69	46		96	1,965
16	572		43	532		70	930		97	194
17	401		44	644		71	1,141		98	<10
18	1,009		45	643		72	<10		99	<10
19	<10		46	501		73	179		100	<10
20	33		47	1,116		74	348			
21	1,122		48	63		75	401			
22	373		49	129		76	231			
23	663		50	1,823		77	887			
24	2,471		51	612		78	<10			
25	444		52	1,316		79	255			
26	16		53	424		80	298			
27	416		54	376		81	174			



The Building Performance Association (BPA) is a 501(c) 6 nonprofit industry association that serves as the hub for businesses, nonprofits, and government agencies working to make America's homes more comfortable, healthy, and energy efficient. Our mission is to transform the market for the home performance industry through advocacy, education, professional development, and networking. Visit www.building-performance.org.



E4TheFuture is dedicated to bringing clean, efficient energy home for every American and promotes energy solutions to advance climate protection and economic fairness. Visit www.E4TheFuture.org.



BW Research Partnership is a full-service, economic and workforce research consulting firm with offices in Carlsbad, California and Wrentham, Massachusetts. It is the nation's leading provider of accurate, comprehensive energy and clean energy research studies. Visit www.bwresearch.com.

Data Source: Unless otherwise stated, all data are from the U.S. Energy and Employment Report, August 2024, by the U.S. Department of Energy (see Appendix B for methodology details). This methodology — adopted by the U.S. Dept. of Energy for its 2017 U.S. Energy and Employment Report, approved by the Office of Management and Budget and grounded on data collected by the Bureau of Labor Statistics — provides the broadly accepted best accounting of all U.S. energy workers.

For questions on BPA analyses please email: communications@building-performance.org

