

Mississippi

Energy Efficiency Jobs in America

15,031
Total Jobs

What are EE jobs?

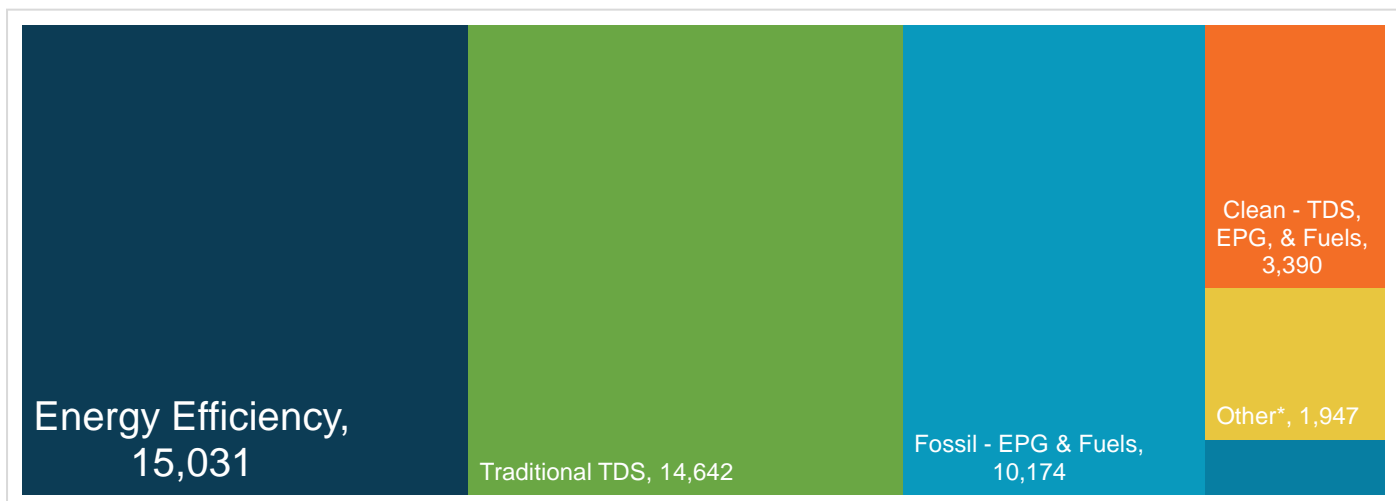
Jobs that deliver goods and services that lower energy use by improving energy efficiency with a focus on appliances, buildings, data systems, financing, new technologies, and more.

What do EE workers do?

- **Manufacture and install** high-efficiency systems, controls, windows, insulation, and ENERGY STAR-certified appliances and products in existing and new homes, commercial and industrial buildings.
- **Design and construct** high-performance buildings such as those earning nationally recognized sustainability and environmental performance ratings.
- **Upgrade and repair** heating, air conditioning, and ventilation (HVAC) and water heating equipment.
- **Educate** property owners and managers on building improvements to unlock savings for businesses, homeowners, schools, states, municipalities, military bases, and more.
- **Analyze building data** using software to maximize energy savings through targeted performance improvements and behavioral changes.
- **Review and approve loans** to finance energy savings performance contracts to improve the comfort, health, and operational costs of buildings.

How does EE compare in Mississippi?

Energy efficiency is the largest energy sector in Mississippi.



TDS = Transmission, Distribution & Storage

EPG = Electric Power Generation

Nuclear (EPG & Fuels) = 718

*Includes other energy subsectors such as corn ethanol, woody biomass, large hydropower, and others.

Presented by:

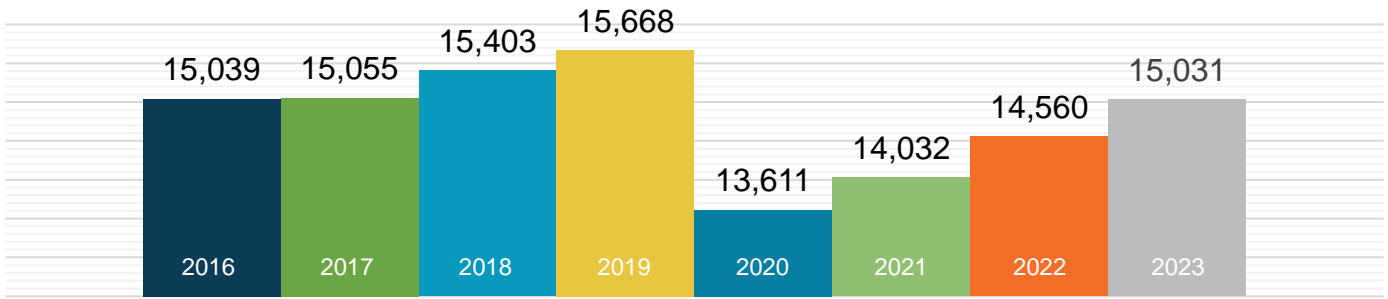


E4 THE FUTURE

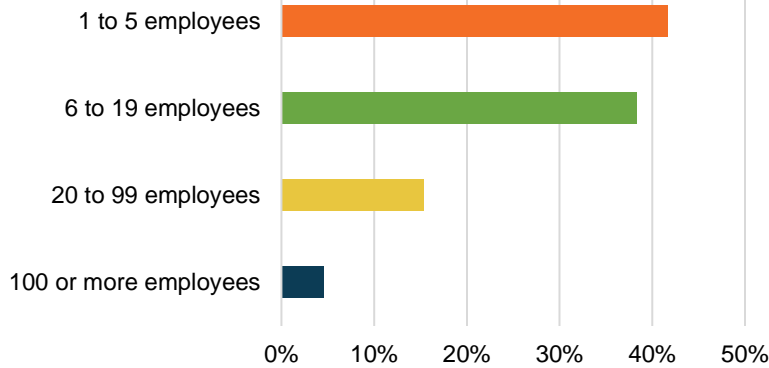
Updated April 2025

What does EE look like in Mississippi?

EE Workers Employed in MS



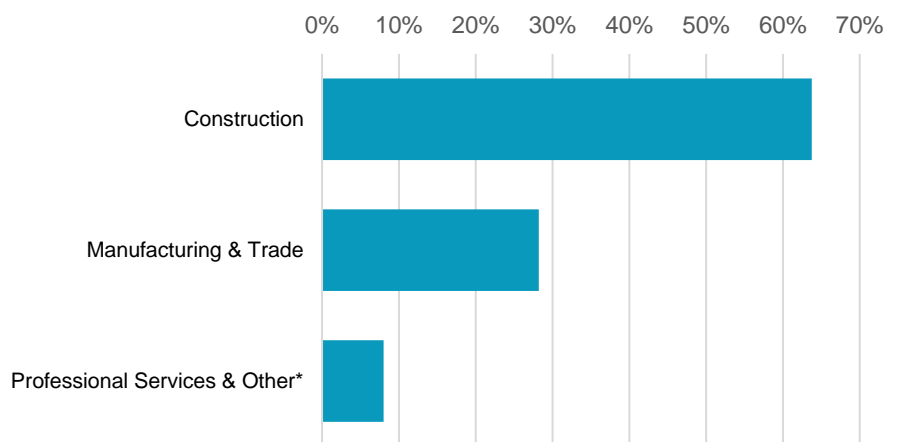
95.4% of MS EE Businesses Have Fewer Than 100 Employees



EE construction workers comprise **19%** of Mississippi's construction workforce

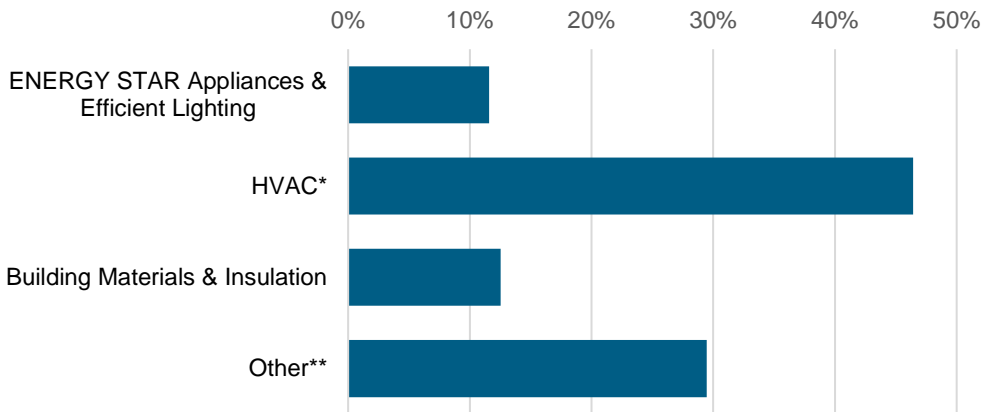


What type of work do energy efficiency firms do?



*Professional services include finance/accounting, architecture, engineering, R&D, etc. and other includes maintenance, and business, and nonprofit organizations.

What energy efficiency sectors employ the most workers?



*Heating, ventilation, air conditioning of higher than standard efficiency/renewable heating & cooling
 **Other such as energy audits, building certifications, and software services

9%
 of Mississippi
 EE workers are
Veterans

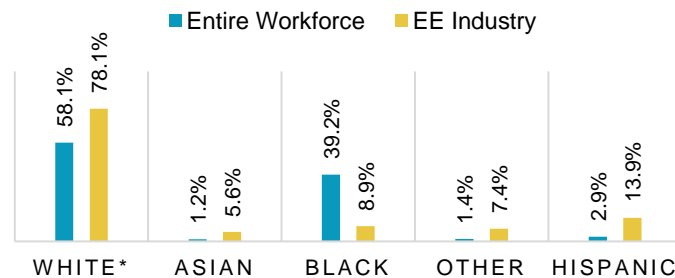


How is EE doing on diversity in Mississippi?

Demographic data is critical to measure progress in expanding the diversity of the EE industry. A more inclusive industry that reflects the communities it serves is a stronger one that better meets the needs of all U.S. residents. Promoting diversity in hiring is key to maintaining a future workforce of qualified professionals and ensuring all Mississippi communities are represented in the EE sector.

The EE industry needs to do more to prioritize minorities and women for training and support that enables access to employment at Mississippi businesses.

Mississippi EE Industry by Race and Ethnicity



*Includes non-Hispanic and Hispanic whites.

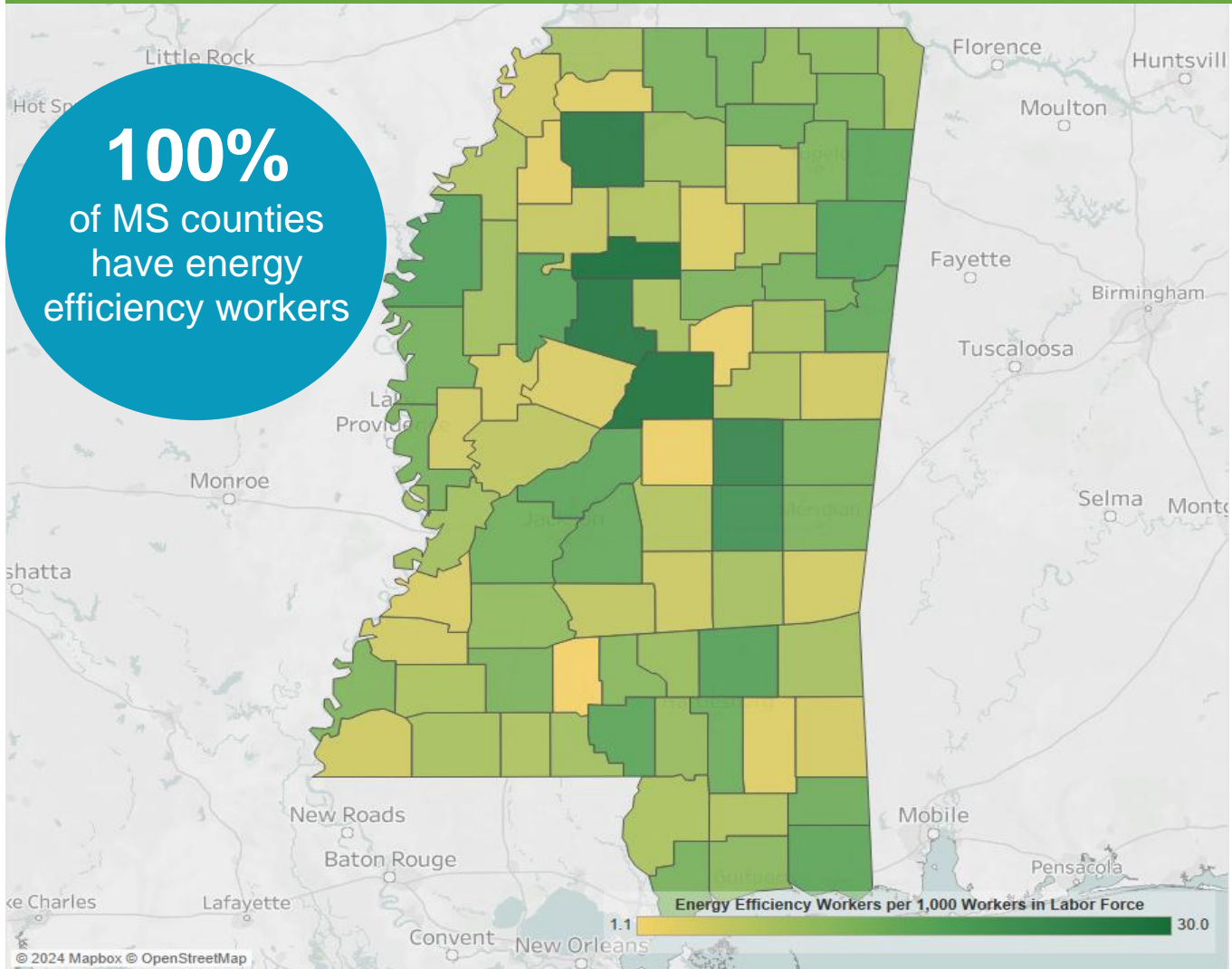
Gender in the Mississippi EE Workforce



Note: The U.S. Bureau of Labor Statistics (BLS) only includes two genders in their survey. Non-binary gender data is missing from this document due to this limitation.

Energy Efficiency Jobs are Everywhere

EE Jobs by County



The energy efficiency job concentration displayed above is capped at thirty jobs per thousand in order to maintain observable differences between the majority of counties within the state. This is done to eliminate the influence outliers have on overall color gradient. For a full list of energy efficiency jobs by county, please visit the Department of Energy's (DOE) United States Energy and Employment Report (USEER) County-Level data site at <https://www.energy.gov/media/330956>.

Congressional		Metropolitan Areas	
District	Jobs	Area	Jobs
1	4,001	Gulfport-Biloxi-Pascagoula	2,046
2	3,562	Hattiesburg	793
3	3,718	Jackson	3,683
4	3,750	Memphis	855
		Rural	7,654

State Senate

District	Jobs		District	Jobs		District	Jobs		District	Jobs
1	833		15	236		29	540		43	174
2	<10		16	449		30	191		44	58
3	627		17	31		31	210		45	88
4	239		18	236		32	377		46	749
5	95		19	<10		33	119		47	535
6	253		20	724		34	1,115		48	611
7	246		21	468		35	140		49	115
8	139		22	231		36	354		50	72
9	400		23	263		37	420		51	398
10	137		24	11		38	43		52	<10
11	157		25	637		39	65			
12	340		26	484		40	411			
13	86		27	<10		41	86			
14	486		28	210		42	121			

State House of Representatives

District	Jobs		District	Jobs		District	Jobs		District	Jobs
1	168		32	137		63	130		94	211
2	<10		33	<10		64	276		95	668
3	99		34	48		65	145		96	158
4	66		35	232		66	163		97	<10
5	494		36	84		67	<10		98	<10
6	284		37	599		68	291		99	30
7	206		38	<10		69	<10		100	<10
8	39		39	17		70	118		101	<10
9	240		40	<10		71	<10		102	<10
10	71		41	<10		72	<10		103	<10
11	13		42	<10		73	<10		104	<10
12	<10		43	<10		74	<10		105	131
13	86		44	46		75	78		106	<10
14	19		45	401		76	90		107	<10
15	94		46	35		77	91		108	<10
16	470		47	51		78	59		109	222
17	<10		48	<10		79	213		110	173
18	86		49	140		80	270		111	322
19	66		50	22		81	81		112	<10
20	113		51	<10		82	<10		113	<10
21	20		52	<10		83	<10		114	200
22	45		53	433		84	<10		115	315
23	193		54	264		85	25		116	<10
24	256		55	<10		86	38		117	386
25	29		56	834		87	777		118	<10
26	11		57	<10		88	201		119	87
27	248		58	352		89	<10		120	<10
28	<10		59	527		90	97		121	<10
29	118		60	273		91	28		122	44
30	12		61	<10		92	<10			
31	159		62	175		93	313			





The Building Performance Association (BPA) is a 501(c) 6 nonprofit industry association that serves as the hub for businesses, nonprofits, and government agencies working to make America's homes more comfortable, healthy, and energy efficient. Our mission is to transform the market for the home performance industry through advocacy, education, professional development, and networking. Visit www.building-performance.org



E4TheFuture is dedicated to bringing clean, efficient energy home for every American and promotes energy solutions to advance climate protection and economic fairness. Visit www.E4TheFuture.org.



BW Research Partnership is a full-service, economic and workforce research consulting firm with offices in Carlsbad, California and Wrentham, Massachusetts. It is the nation's leading provider of accurate, comprehensive energy and clean energy research studies. Visit www.bwresearch.com.

Data Source: Unless otherwise stated, all data are from the U.S. Energy and Employment Report, August 2024, by the U.S. Department of Energy (see Appendix B for methodology details). This methodology — adopted by the U.S. Dept. of Energy for its 2017 U.S. Energy and Employment Report, approved by the Office of Management and Budget and grounded on data collected by the Bureau of Labor Statistics — provides the broadly accepted best accounting of all U.S. energy workers.

For questions on BPA analyses please email: communications@building-performance.org

