

# Oklahoma

## Energy Efficiency Jobs in America

14,867  
Total Jobs

### What are EE jobs?

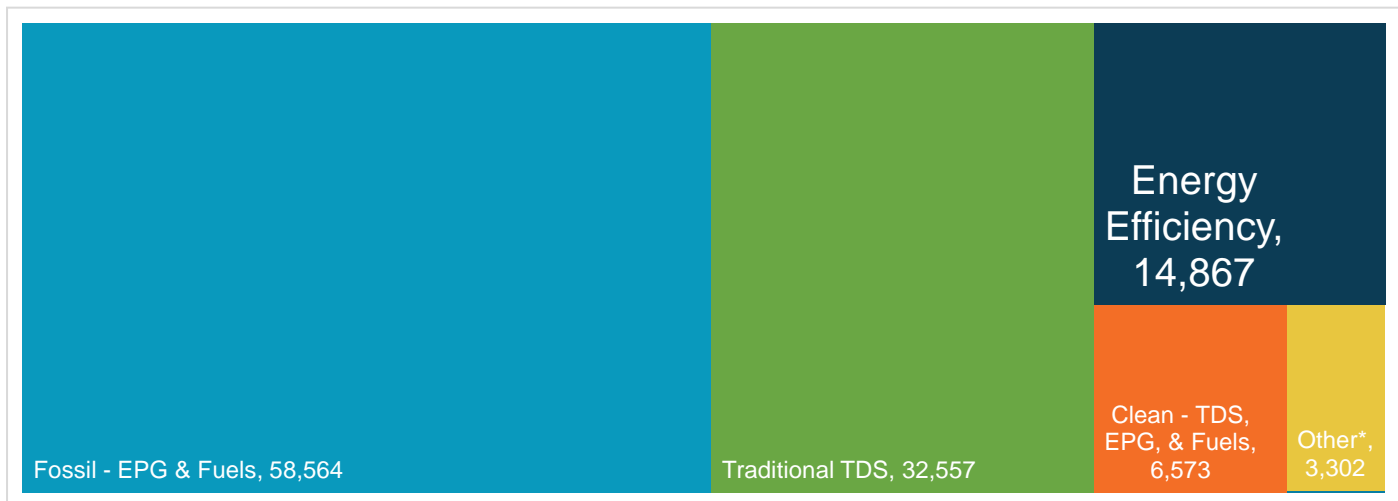
*Jobs that deliver goods and services that lower energy use by improving energy efficiency with a focus on appliances, buildings, data systems, financing, new technologies, and more.*

### What do EE workers do?

- **Manufacture and install** high-efficiency systems, controls, windows, insulation, and ENERGY STAR-certified appliances and products in existing and new homes, commercial and industrial buildings.
- **Design and construct** high-performance buildings such as those earning nationally recognized sustainability and environmental performance ratings.
- **Upgrade and repair** heating, air conditioning, and ventilation (HVAC) and water heating equipment.
- **Educate** property owners and managers on building improvements to unlock savings for businesses, homeowners, schools, states, municipalities, military bases, and more.
- **Analyze building data** using software to maximize energy savings through targeted performance improvements and behavioral changes.
- **Review and approve loans** to finance energy savings performance contracts to improve the comfort, health, and operational costs of buildings.

### How does EE compare in Oklahoma?

*Energy efficiency is the third largest energy sector in Oklahoma.*



TDS = Transmission, Distribution & Storage

EPG = Electric Power Generation

Nuclear (EPG & Fuels) = 46

\*Includes other energy subsectors such as corn ethanol, woody biomass, large hydropower, and others.

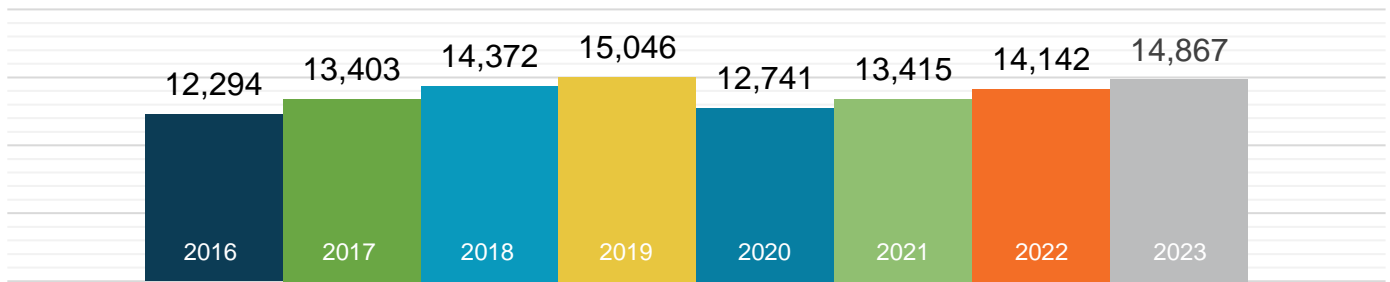
Presented by:



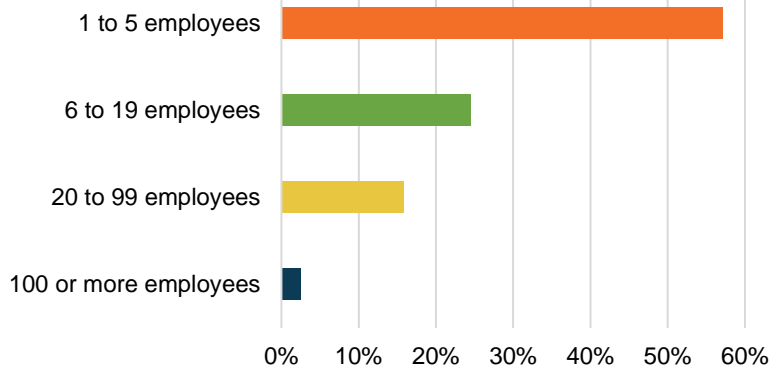
**E4** THE FUTURE

## What does EE look like in Oklahoma?

### EE Workers Employed in OK



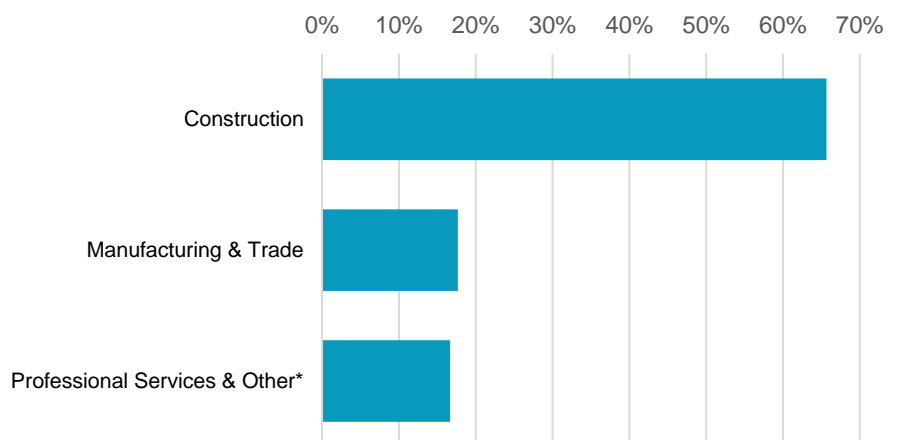
### 97.5% of OK EE Businesses Have Fewer Than 100 Employees



EE construction workers comprise **12%** of Oklahoma's construction workforce

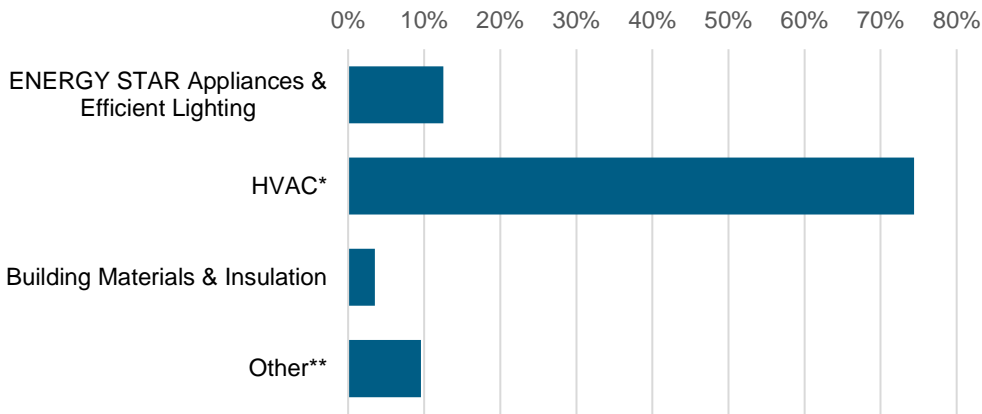


### What type of work do energy efficiency firms do?



\*Professional services include finance/accounting, architecture, engineering, R&D, etc. and other includes maintenance, and business, and nonprofit organizations.

## What energy efficiency sectors employ the most workers?



\*Heating, ventilation, air conditioning of higher than standard efficiency/renewable heating & cooling  
 \*\*Other such as energy audits, building certifications, and software services

**9%**  
 of Oklahoma  
 EE workers are  
**Veterans**

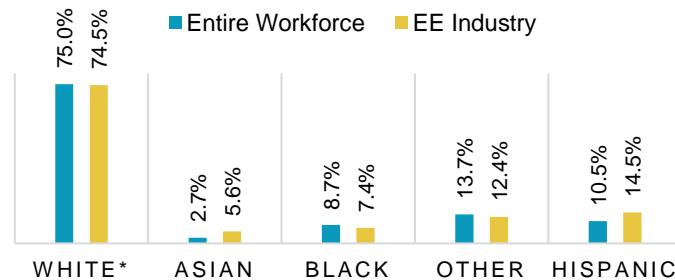


## How is EE doing on diversity in Oklahoma?

*Demographic data is critical to measure progress in expanding the diversity of the EE industry. A more inclusive industry that reflects the communities it serves is a stronger one that better meets the needs of all U.S. residents. Promoting diversity in hiring is key to maintaining a future workforce of qualified professionals and ensuring all Oklahoma communities are represented in the EE sector.*

The EE industry needs to do more to prioritize minorities and women for training and support that enables access to employment at Oklahoma businesses.

### Oklahoma EE Industry by Race and Ethnicity



\*Includes non-Hispanic and Hispanic whites.

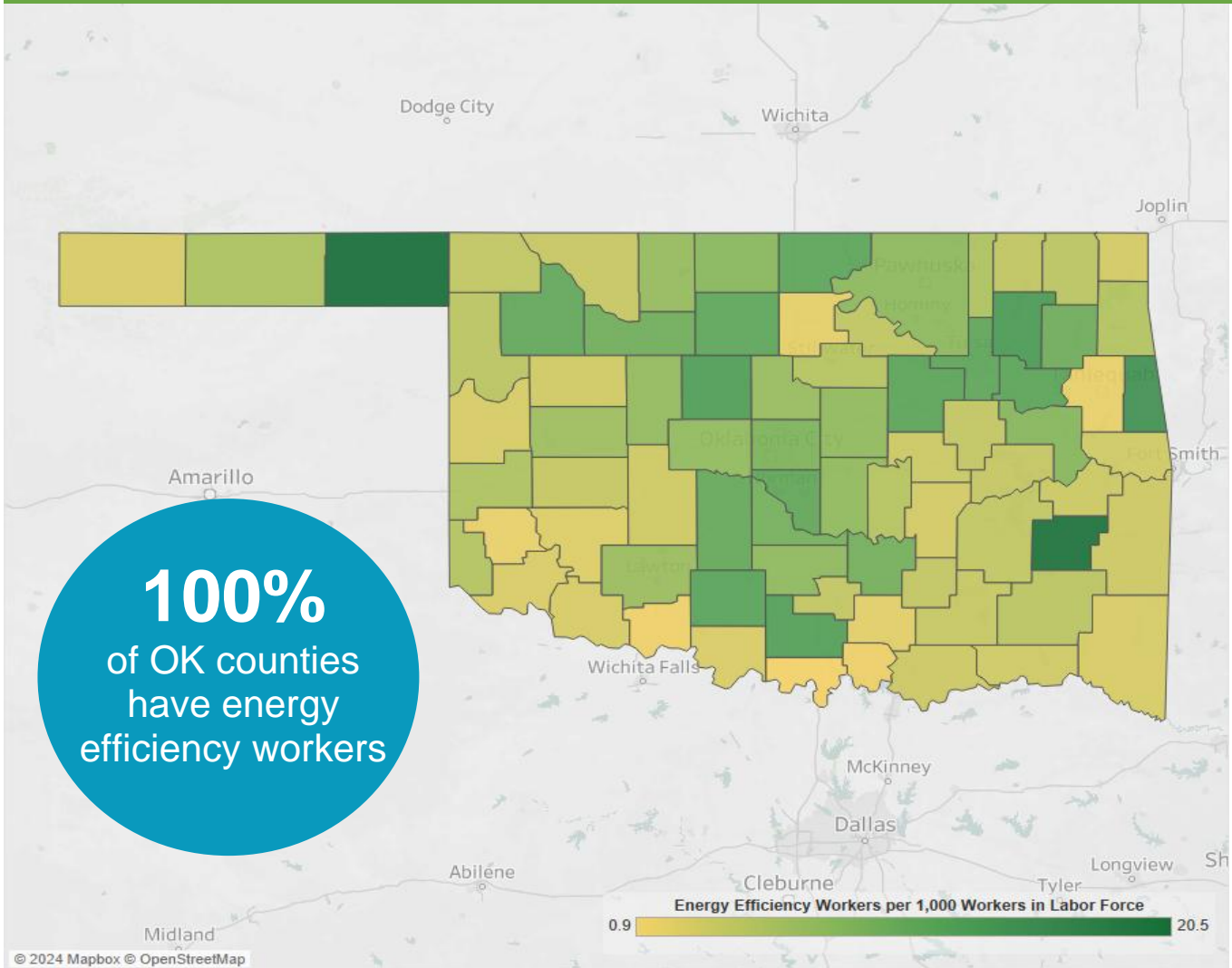
### Gender in the Oklahoma EE Workforce



Note: The U.S. Bureau of Labor Statistics (BLS) only includes two genders in their survey. Non-binary gender data is missing from this document due to this limitation.

# Energy Efficiency Jobs are Everywhere

## EE Jobs by County



Congressional		Metropolitan Areas	
District	Jobs	Area	Jobs
1	4,251	Fort Smith	71
2	1,713	Lawton	284
3	2,874	Oklahoma City	6,039
4	2,890	Tulsa	4,999
5	3,139	Rural	3,473

State Senate										
District	Jobs		District	Jobs		District	Jobs		District	Jobs
1	442		13	402		25	793		37	<10
2	522		14	328		26	357		38	116
3	167		15	759		27	333		39	<10
4	117		16	<10		28	75		40	427
5	155		17	611		29	151		41	<10
6	193		18	430		30	1,027		42	111
7	311		19	364		31	417		43	95
8	217		20	531		32	12		44	1,065
9	105		21	225		33	<10		45	21
10	487		22	475		34	46		46	74
11	945		23	383		35	852		47	59
12	305		24	100		36	26		48	213

State House of Representatives										
District	Jobs		District	Jobs		District	Jobs		District	Jobs
1	79		27	324		53	65		79	<10
2	43		28	136		54	360		80	<10
3	60		29	223		55	286		81	141
4	158		30	46		56	69		82	235
5	352		31	335		57	68		83	287
6	234		32	114		58	217		84	474
7	21		33	240		59	10		85	286
8	160		34	12		60	<10		86	<10
9	190		35	57		61	156		87	<10
10	306		36	43		62	208		88	531
11	<10		37	170		63	67		89	238
12	160		38	354		64	<10		90	37
13	121		39	405		65	22		91	<10
14	<10		40	<10		66	491		92	<10
15	81		41	334		67	780		93	<10
16	165		42	53		68	44		94	98
17	179		43	203		69	<10		95	50
18	60		44	231		70	390		96	12
19	184		45	<10		71	<10		97	198
20	423		46	<10		72	354		98	<10
21	<10		47	184		73	308		99	43
22	446		48	46		74	<10		100	<10
23	618		49	42		75	<10		101	<10
24	64		50	118		76	<10			
25	<10		51	137		77	<10			
26	195		52	98		78	<10			



The Building Performance Association (BPA) is a 501(c) 6 nonprofit industry association that serves as the hub for businesses, nonprofits, and government agencies working to make America's homes more comfortable, healthy, and energy efficient. Our mission is to transform the market for the home performance industry through advocacy, education, professional development, and networking. Visit [www.building-performance.org](http://www.building-performance.org).



E4TheFuture is dedicated to bringing clean, efficient energy home for every American and promotes energy solutions to advance climate protection and economic fairness. Visit [www.E4TheFuture.org](http://www.E4TheFuture.org).



BW Research Partnership is a full-service, economic and workforce research consulting firm with offices in Carlsbad, California and Wrentham, Massachusetts. It is the nation's leading provider of accurate, comprehensive energy and clean energy research studies. Visit [www.bwresearch.com](http://www.bwresearch.com).

Data Source: Unless otherwise stated, all data are from the U.S. Energy and Employment Report, August 2024, by the U.S. Department of Energy (see Appendix B for methodology details). This methodology — adopted by the U.S. Dept. of Energy for its 2017 U.S. Energy and Employment Report, approved by the Office of Management and Budget and grounded on data collected by the Bureau of Labor Statistics — provides the broadly accepted best accounting of all U.S. energy workers.

For questions on BPA analyses please email: [communications@building-performance.org](mailto:communications@building-performance.org)

