

Kentucky

Energy Efficiency Jobs in America

25,562
Total Jobs

What are EE jobs?

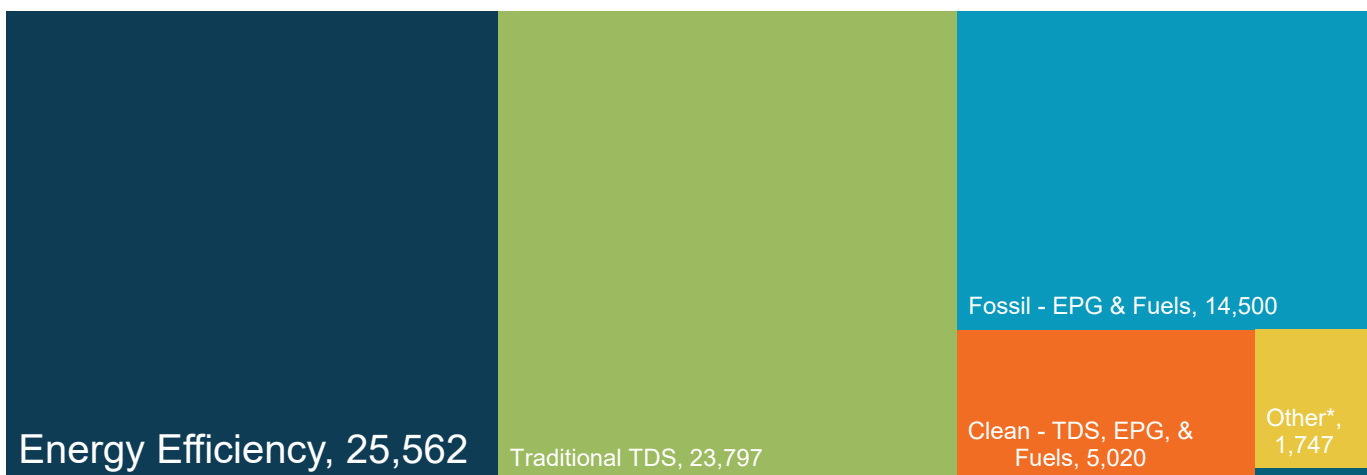
Jobs that reduce energy use by improving efficiency in appliances, buildings, data systems, financing, new technologies, and more.

What do EE workers do?

- **Manufacture and install** high-efficiency systems, controls, windows, insulation, and ENERGY STAR-certified appliances and products in existing and new homes, as well as commercial, and industrial buildings.
- **Design and construct** high-performance buildings such as those earning nationally recognized sustainability and environmental performance ratings.
- **Upgrade and repair** heating, air conditioning, and ventilation (HVAC) and water heating equipment.
- **Educate** property owners and managers on building improvements to unlock savings for businesses, homeowners, schools, states, municipalities, military bases, and more.
- **Analyze building data** using software to maximize energy savings through targeted performance improvements and behavioral changes.
- **Review and approve loans** to finance energy savings performance contracts to improve the comfort, health, and operational costs of buildings.

How does EE compare to other energy sectors in Kentucky?

Energy efficiency is the largest energy sector in Kentucky.



TDS = Transmission, Distribution, & Storage

EPG = Electric Power Generation

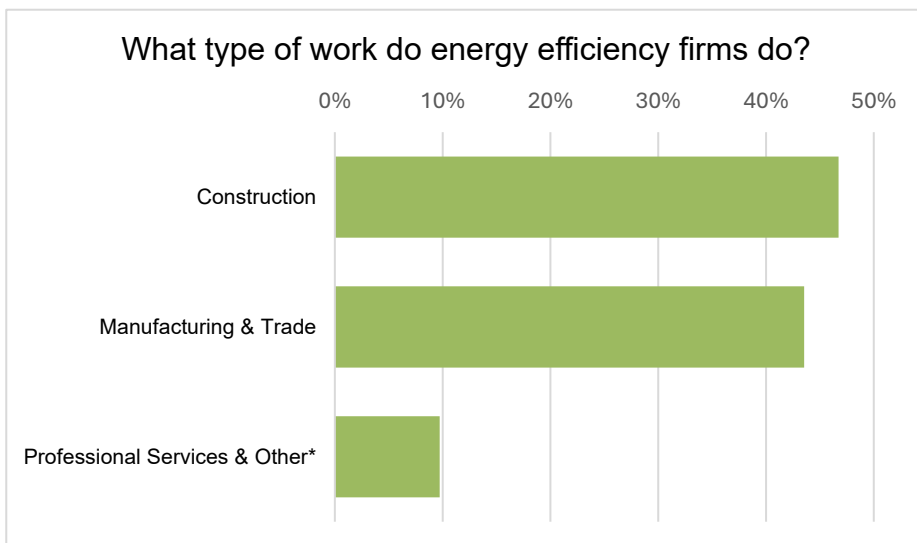
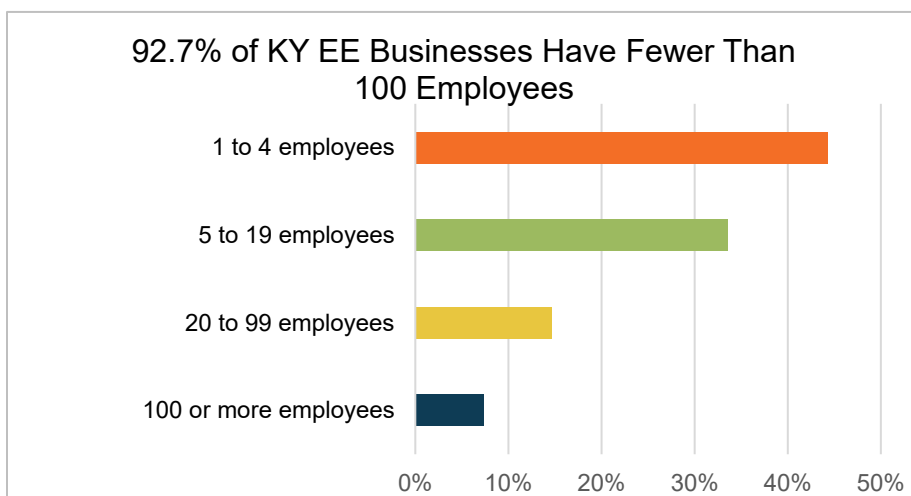
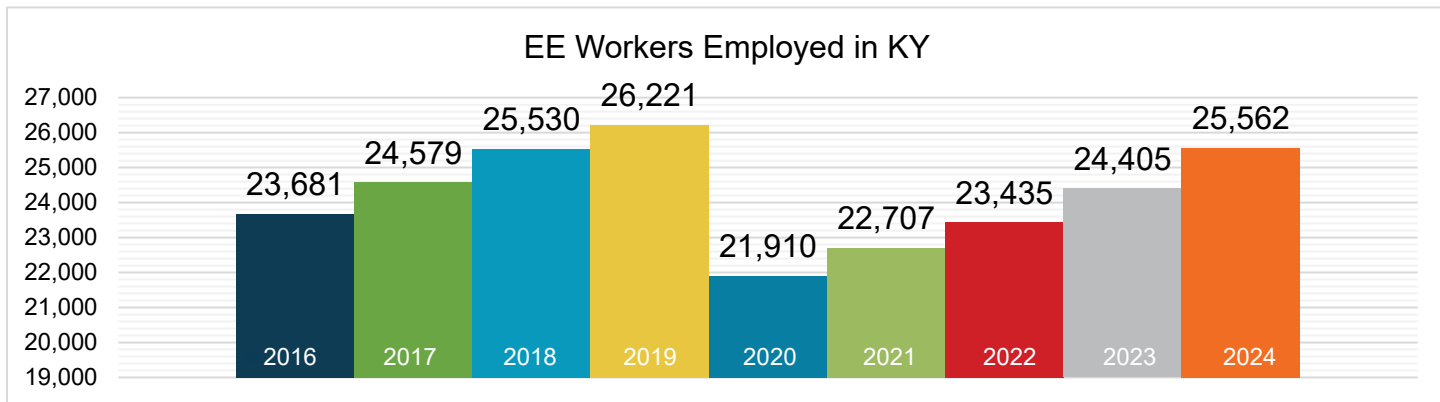
**Nuclear - EPG & Fuels = 162

*Includes other energy subsectors such as corn ethanol, woody biomass, large hydropower, and others.

Presented by:

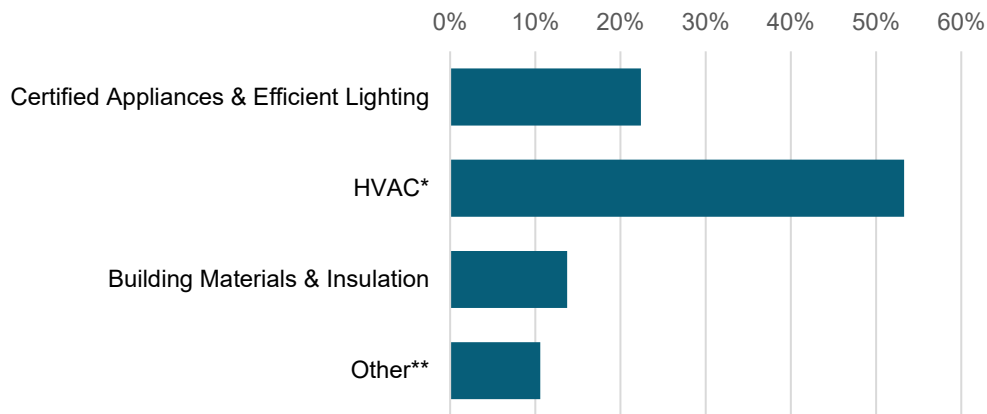


What does EE look like in Kentucky?



*Professional services include finance, accounting, architecture, engineering, research and development, and more. The "other" category includes roles in maintenance, business operations, and nonprofit organizations.

What energy efficiency sectors employ the most workers?



Certified Appliances = ENERGY STAR-certified appliances

*Heating, ventilation, air conditioning of higher than standard efficiency/renewable heating and cooling

**Other includes energy audits, building certifications, and software services

9%
of Kentucky
EE workers are
veterans

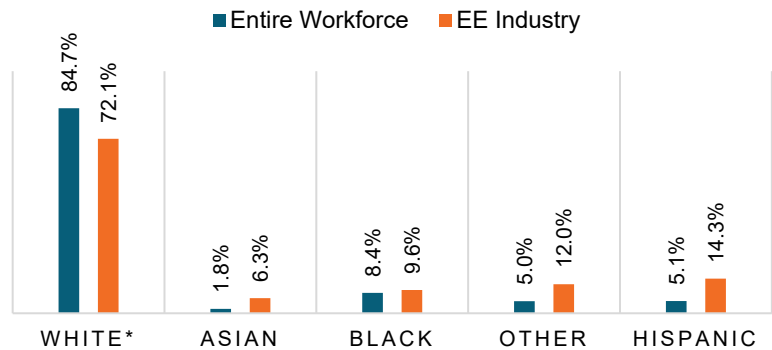


How representative is the EE workforce in Kentucky?

Demographic data is critical to measure progress towards a more representative EE workforce. Tracking this data helps show how well Kentucky's EE workforce reflects the communities it serves and where gaps remain.

Expanded training programs in Kentucky can help ensure energy efficiency careers are accessible to all.

Kentucky EE Industry by Race and Ethnicity



*Includes non-Hispanic and Hispanic whites.

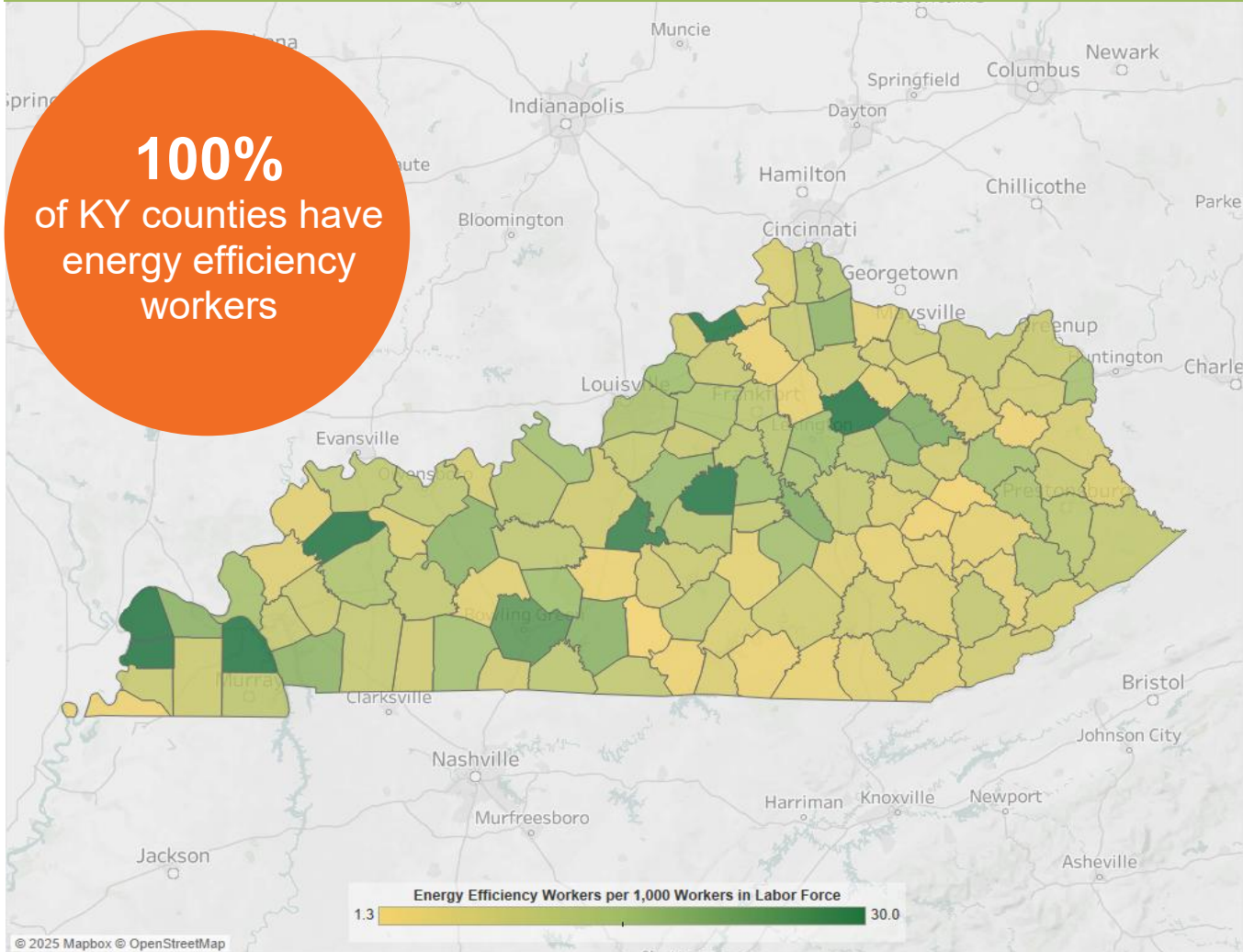
Gender in the Kentucky EE Workforce



Note: The U.S. Bureau of Labor Statistics (BLS) only includes two genders in their survey. Nonbinary gender data is missing from this document due to this limitation.

Energy efficiency jobs are everywhere

EE Jobs by County



The energy efficiency job concentration displayed above is capped at thirty jobs per thousand in order to maintain observable differences between the majority of counties within the state. This is done to eliminate the influence outliers have on overall color gradient. For a full list of energy efficiency jobs by county, please visit the Department of Energy's (DOE) United States Energy and Employment Report (USEER) County-Level data site at <https://www.energy.gov/media/348937>.

Congressional		Metropolitan Areas					
District	Jobs	Area		Jobs	Area		Jobs
1	3,988	Bowling Green		1,816	Lexington-Fayette		4,239
2	4,299	Cincinnati		2,062	Louisville/Jefferson County		7,549
3	6,553	Clarksville		357	Owensboro		557
4	3,435	Elizabethtown-Fort Knox		544	Rural		7,768
5	2,042	Evansville		201			
6	5,246	Huntington-Ashland		469			

State Senate										
District	Jobs		District	Jobs		District	Jobs		District	Jobs
1	395		11	603		21	316		31	312
2	1,285		12	973		22	1,118		32	803
3	444		13	871		23	726		33	1,235
4	595		14	669		24	460		34	869
5	374		15	305		25	186		35	1,017
6	759		16	567		26	756		36	1,186
7	671		17	391		27	834		37	834
8	573		18	544		28	721		38	531
9	1,247		19	786		29	279			
10	392	20	733	30	206					

State House of Representatives										
District	Jobs		District	Jobs		District	Jobs		District	Jobs
1	204		28	567		55	221		82	77
2	107		29	350		56	164		83	162
3	749		30	294		57	394		84	67
4	246		31	781		58	235		85	177
5	184		32	285		59	156		86	85
6	372		33	331		60	389		87	80
7	234		34	449		61	76		88	512
8	289		35	506		62	126		89	50
9	105		36	339		63	258		90	119
10	119		37	322		64	338		91	42
11	207		38	407		65	149		92	88
12	165		39	245		66	214		93	777
13	219		40	314		67	139		94	105
14	245		41	341		68	274		95	219
15	100		42	453		69	158		96	77
16	181		43	355		70	131		97	97
17	869		44	382		71	152		98	68
18	106		45	293		72	266		99	118
19	148		46	164		73	177		100	426
20	779		47	293		74	240			
21	99		48	378		75	572			
22	130		49	125		76	278			
23	296		50	316		77	671			
24	110		51	223		78	118			
25	188		52	46		79	303			
26	195		53	80		80	113			
27	174	54	171	81	273					





The Building Performance Association (BPA) is a nonprofit industry association that serves as the hub for businesses, nonprofits, and government agencies working to make America's homes more energy-efficient, comfortable, healthy, and safe. Visit www.building-performance.org.



BW Research Partnership is a full-service, economic and workforce research consulting firm with offices in Carlsbad, California and Wrentham, Massachusetts. It is the nation's leading provider of accurate, comprehensive energy and clean energy research studies. Visit www.bwresearch.com.

Data Source: Unless otherwise stated, all data are from the August 2025 U.S. Energy and Employment Report, by the U.S. Department of Energy (see Appendix B for methodology details). This methodology—adopted by the U.S. Dept. of Energy for its 2017 U.S. Energy and Employment Report, approved by the Office of Management and Budget and grounded on data collected by the Bureau of Labor Statistics—provides the broadly accepted best accounting of all U.S. energy workers.

For questions on BPA analyses, please email: communications@building-performance.org.

