

Alaska

Energy Efficiency Jobs in America

4,373
Total Jobs

What are EE jobs?

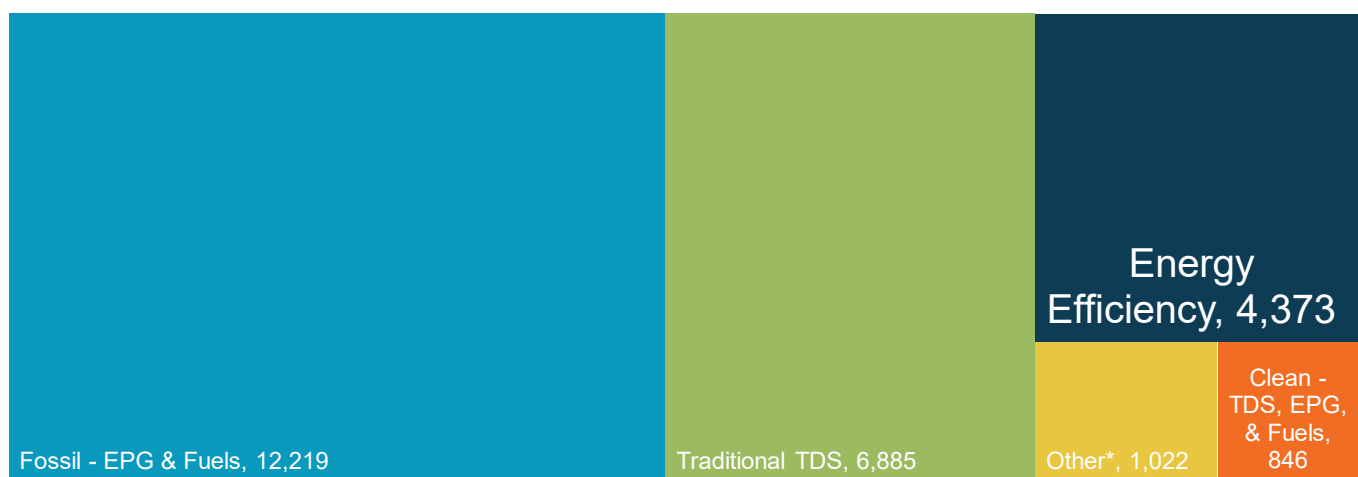
Jobs that reduce energy use by improving efficiency in appliances, buildings, data systems, financing, new technologies, and more.

What do EE workers do?

- **Manufacture and install** high-efficiency systems, controls, windows, insulation, and ENERGY STAR-certified appliances and products in existing and new homes, as well as commercial, and industrial buildings.
- **Design and construct** high-performance buildings such as those earning nationally recognized sustainability and environmental performance ratings.
- **Upgrade and repair** heating, air conditioning, and ventilation (HVAC) and water heating equipment.
- **Educate** property owners and managers on building improvements to unlock savings for businesses, homeowners, schools, states, municipalities, military bases, and more.
- **Analyze building data** using software to maximize energy savings through targeted performance improvements and behavioral changes.
- **Review and approve loans** to finance energy savings performance contracts to improve the comfort, health, and operational costs of buildings.

How does EE compare to other energy sectors in Alaska?

Energy efficiency is the third largest energy sector in Alaska.



TDS = Transmission, Distribution, & Storage
EPG = Electric Power Generation

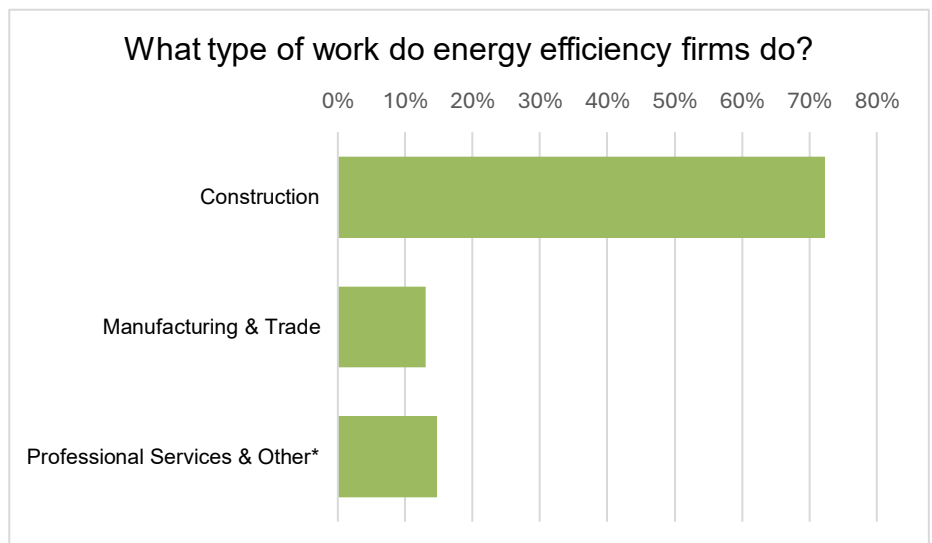
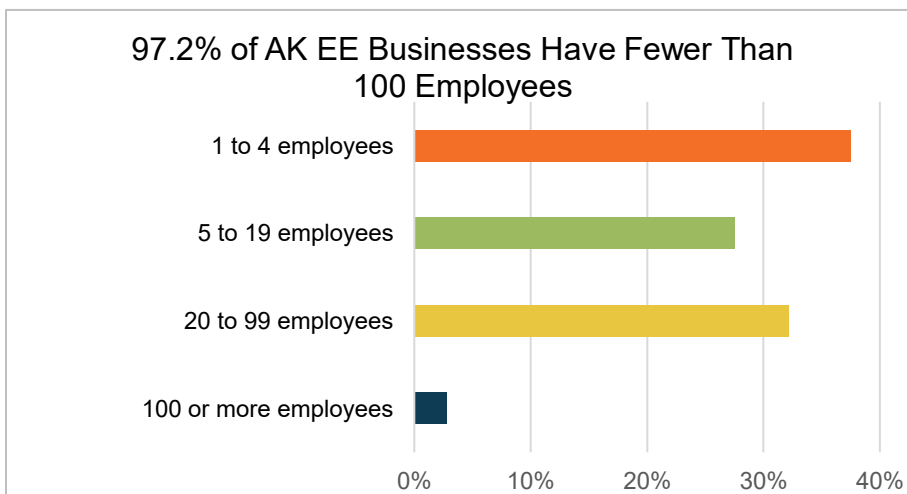
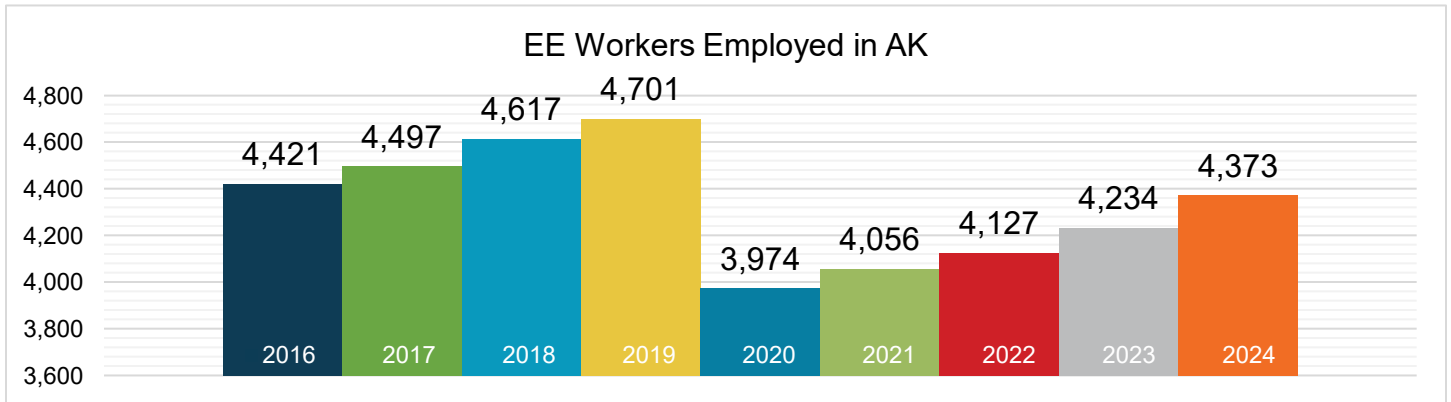
**Nuclear - EPG & Fuels = 14

*Includes other energy subsectors such as corn ethanol, woody biomass, large hydropower, and others.

Presented by:



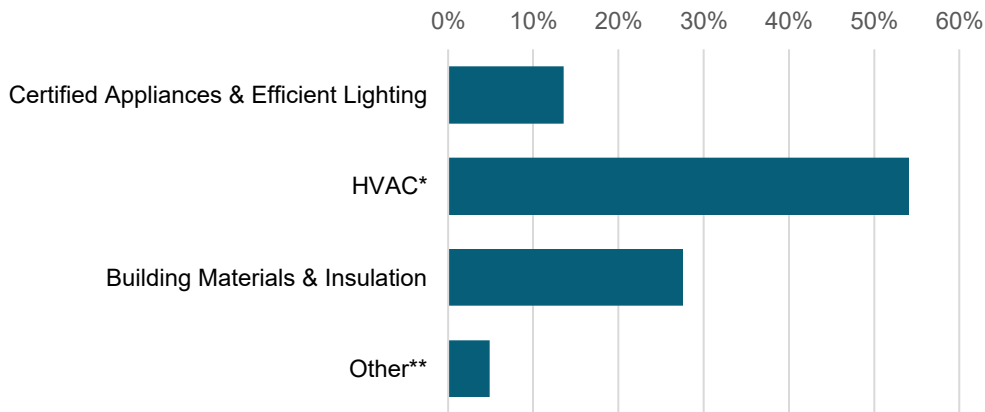
What does EE look like in Alaska?



*Professional services include finance, accounting, architecture, engineering, research and development, and more. The "other" category includes roles in maintenance, business operations, and nonprofit organizations.



What energy efficiency sectors employ the most workers?



Certified Appliances = ENERGY STAR-certified appliances

*Heating, ventilation, air conditioning of higher than standard efficiency/renewable heating and cooling

**Other includes energy audits, building certifications, and software services

9%
of Alaska
EE workers are
veterans

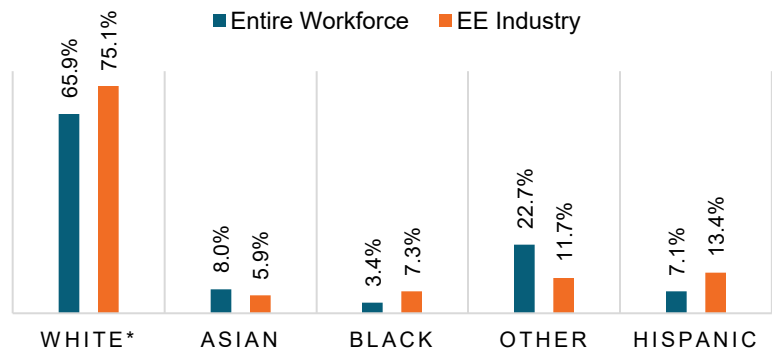


How representative is the EE workforce in Alaska?

Demographic data is critical to measure progress towards a more representative EE workforce. Tracking this data helps show how well Alaska's EE workforce reflects the communities it serves and where gaps remain.

Expanded training programs in Alaska can help ensure energy efficiency careers are accessible to all.

Alaska EE Industry by Race and Ethnicity



*Includes non-Hispanic and Hispanic whites.

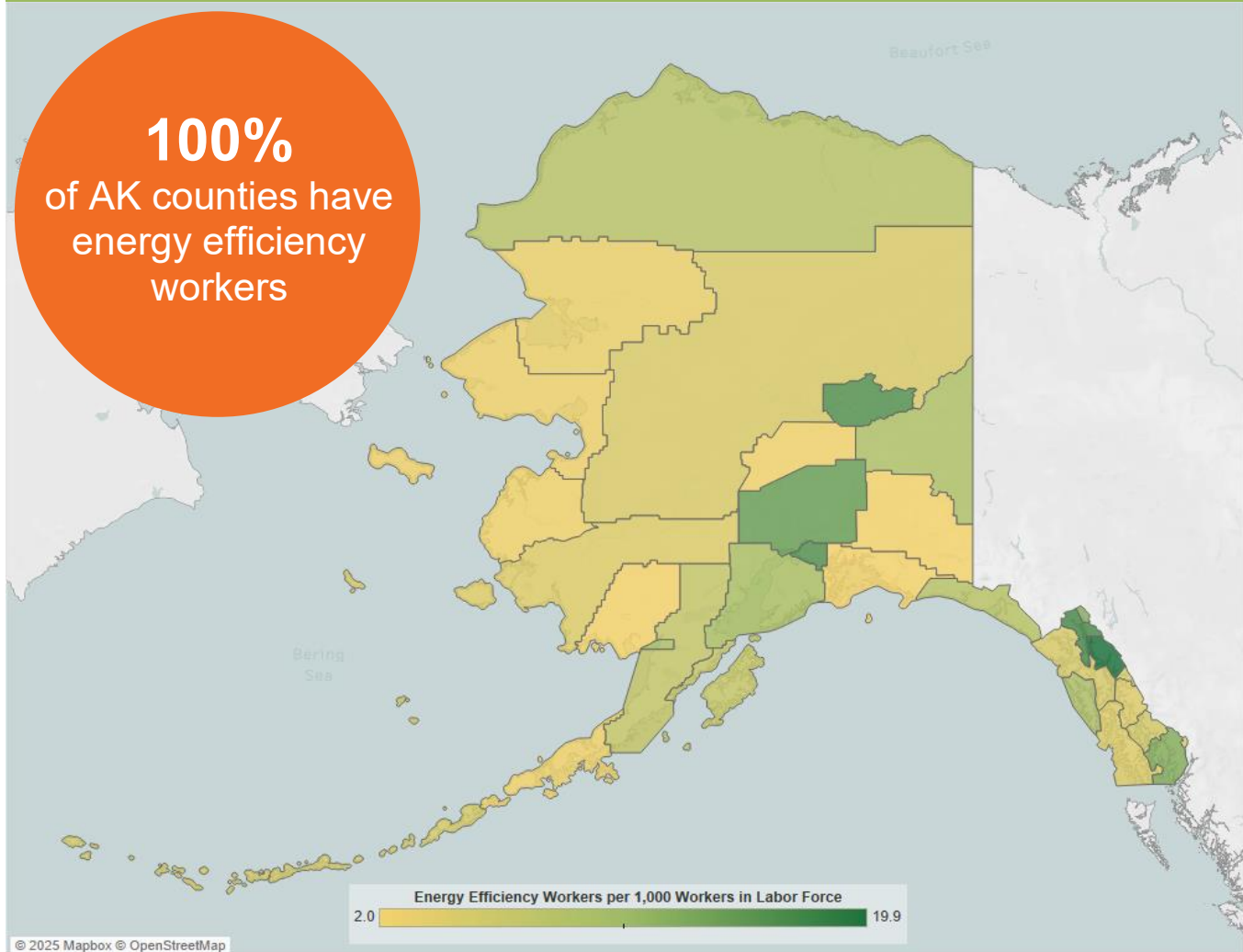
Gender in the Alaska EE Workforce



Note: The U.S. Bureau of Labor Statistics (BLS) only includes two genders in their survey. Nonbinary gender data is missing from this document due to this limitation.

Energy efficiency jobs are everywhere

EE Jobs by County



Congressional		Metropolitan Areas	
District	Jobs	Area	Jobs
1	4,373	Anchorage	2,798
		Fairbanks	588
		Rural	986

State Senate				
District	Jobs		District	Jobs
00A	138		00K	349
00B	353		00L	297
00C	110		00M	117
00D	119		00N	261
00E	386		00O	57
00F	315		00P	169
00G	193		00Q	245
00H	334		00R	222
00I	244		00S	55
00J	284		00T	125

State House of Representatives						
District		Jobs		District		Jobs
1		84		22		118
2		48		23		213
3		<10		24		71
4		320		25		112
5		48		26		72
6		57		27		93
7		101		28		158
8		14		29		<10
9		192		30		48
10		178		31		110
11		<10		32		52
12		302		33		132
13		78		34		103
14		107		35		175
15		191		36		38
16		129		37		29
17		147		38		24
18		87		39		10
19		272		40		110
20		<10				
21		335				





The Building Performance Association (BPA) is a nonprofit industry association that serves as the hub for businesses, nonprofits, and government agencies working to make America's homes more energy-efficient, comfortable, healthy, and safe. Visit www.building-performance.org.



BW Research Partnership is a full-service, economic and workforce research consulting firm with offices in Carlsbad, California and Wrentham, Massachusetts. It is the nation's leading provider of accurate, comprehensive energy and clean energy research studies. Visit www.bwresearch.com.

Data Source: Unless otherwise stated, all data are from the August 2025 U.S. Energy and Employment Report, by the U.S. Department of Energy (see Appendix B for methodology details). This methodology—adopted by the U.S. Dept. of Energy for its 2017 U.S. Energy and Employment Report, approved by the Office of Management and Budget and grounded on data collected by the Bureau of Labor Statistics—provides the broadly accepted best accounting of all U.S. energy workers.

For questions on BPA analyses, please email: communications@building-performance.org.

