

# South Carolina

## Energy Efficiency Jobs in America

31,530  
Total Jobs

### What are EE jobs?

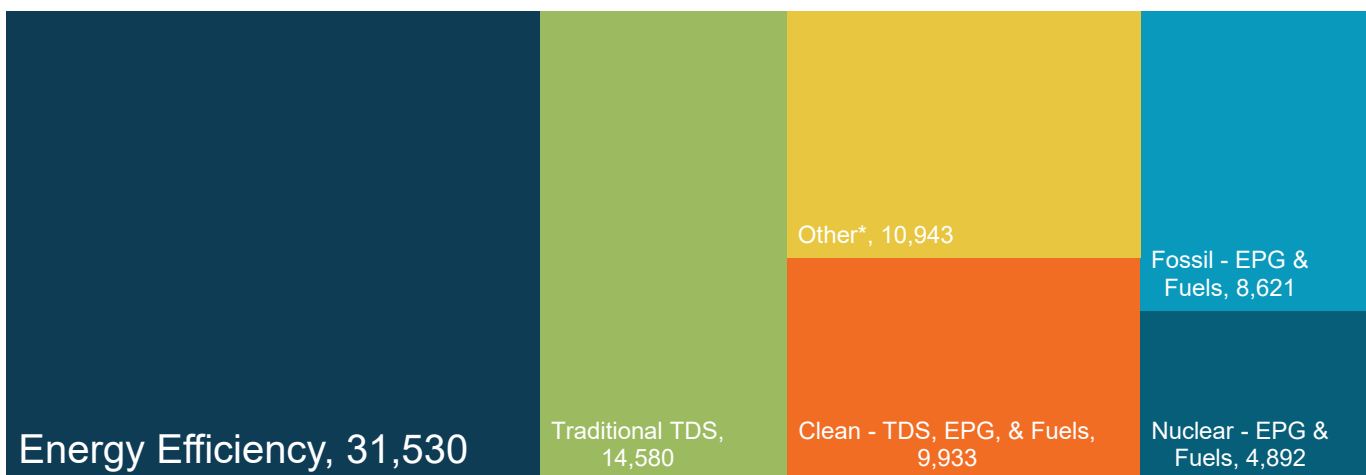
*Jobs that reduce energy use by improving efficiency in appliances, buildings, data systems, financing, new technologies, and more.*

### What do EE workers do?

- **Manufacture and install** high-efficiency systems, controls, windows, insulation, and ENERGY STAR-certified appliances and products in existing and new homes, as well as commercial, and industrial buildings.
- **Design and construct** high-performance buildings such as those earning nationally recognized sustainability and environmental performance ratings.
- **Upgrade and repair** heating, air conditioning, and ventilation (HVAC) and water heating equipment.
- **Educate** property owners and managers on building improvements to unlock savings for businesses, homeowners, schools, states, municipalities, military bases, and more.
- **Analyze building data** using software to maximize energy savings through targeted performance improvements and behavioral changes.
- **Review and approve loans** to finance energy savings performance contracts to improve the comfort, health, and operational costs of buildings.

### How does EE compare to other energy sectors in South Carolina?

*Energy efficiency is the largest energy sector in South Carolina.*



TDS = Transmission, Distribution, & Storage

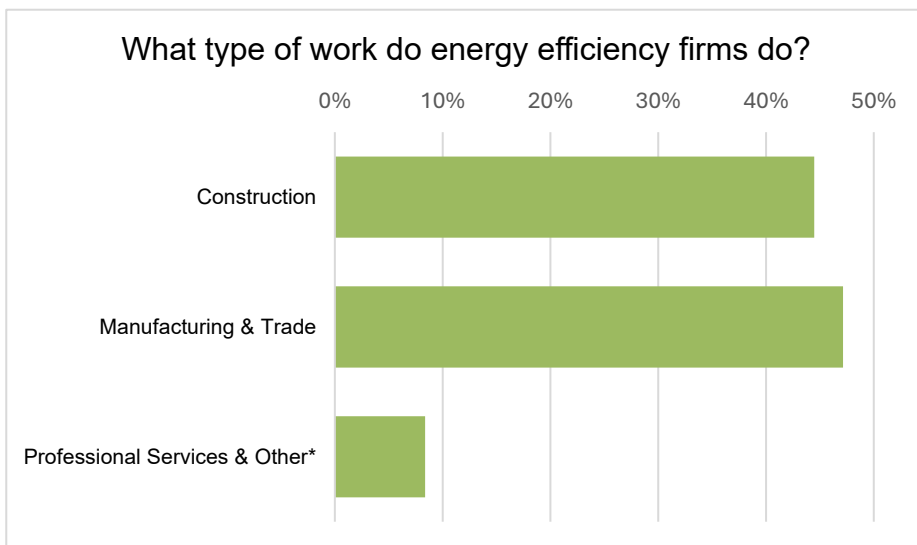
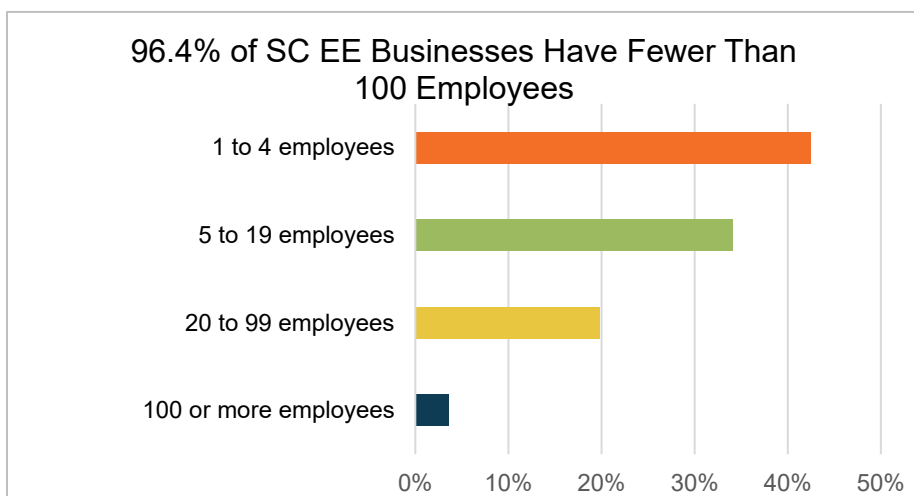
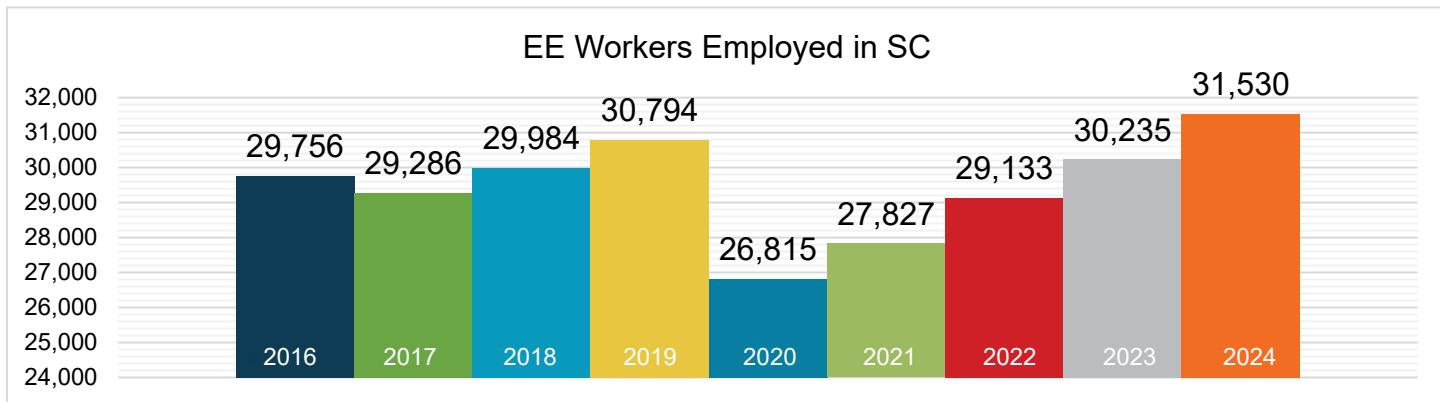
EPG = Electric Power Generation

\*Includes other energy subsectors such as corn ethanol, woody biomass, large hydropower, and others.

Presented by:

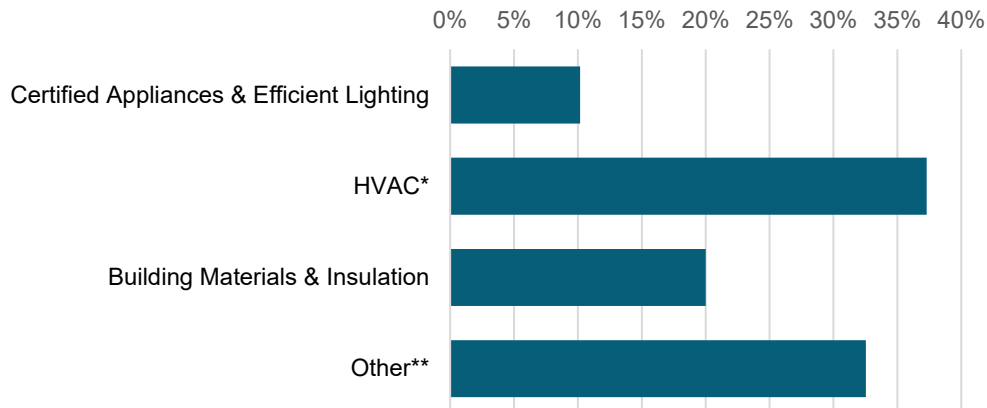


## What does EE look like in South Carolina?



\*Professional services include finance, accounting, architecture, engineering, research and development, and more. The "other" category includes roles in maintenance, business operations, and nonprofit organizations.

## What energy efficiency sectors employ the most workers?



Certified Appliances = ENERGY STAR-certified appliances

\*Heating, ventilation, air conditioning of higher than standard efficiency/renewable heating and cooling

\*\*Other includes energy audits, building certifications, and software services

**9%**  
of South Carolina  
EE workers are  
**veterans**

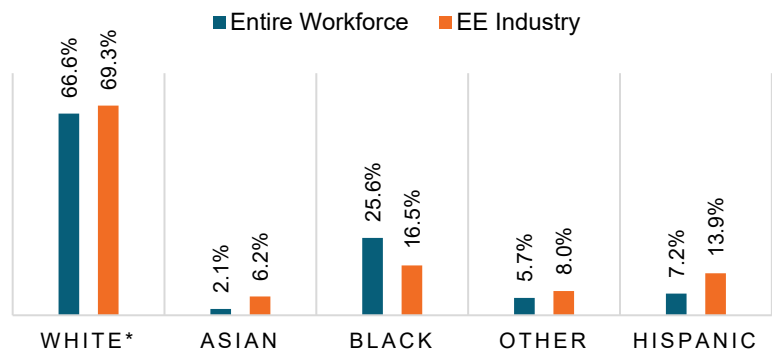


## How representative is the EE workforce in South Carolina?

Demographic data is critical to measure progress towards a more representative EE workforce. Tracking this data helps show how well South Carolina's EE workforce reflects the communities it serves and where gaps remain.

Expanded training programs in South Carolina can help ensure energy efficiency careers are accessible to all.

### South Carolina EE Industry by Race and Ethnicity



\*Includes non-Hispanic and Hispanic whites.

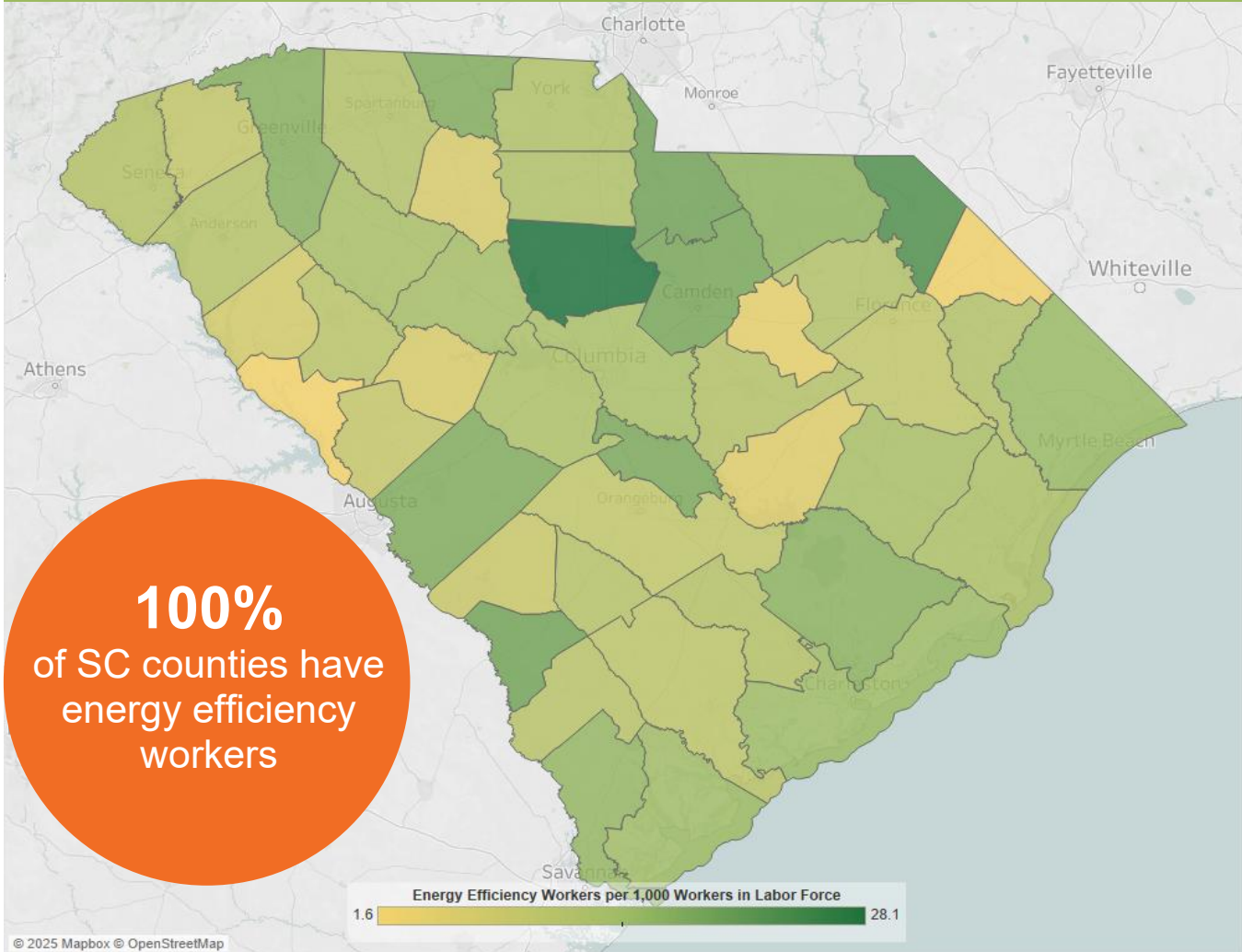
### Gender in the South Carolina EE Workforce



Note: The U.S. Bureau of Labor Statistics (BLS) only includes two genders in their survey. Nonbinary gender data is missing from this document due to this limitation.

# Energy efficiency jobs are everywhere

## EE Jobs by County



Congressional		Metropolitan Areas			
District	Jobs	Area	Jobs	Area	Jobs
1	4,710	Augusta-Richmond County	1,238	Spartanburg	1,915
2	4,953	Charleston-North Charleston	5,869	Sumter	406
3	3,231	Charlotte-Concord-Gastonia	1,985	Rural	5,009
4	6,259	Columbia	5,371		
5	3,740	Florence	908		
6	4,665	Greenville-Anderson-Mauldin	6,649		
7	3,971	Myrtle Beach-Conway-North Myrtle Beach	2,181		

State Senate										
District	Jobs		District	Jobs		District	Jobs		District	Jobs
1	418		13	450		25	314		37	792
2	277		14	683		26	625		38	385
3	468		15	451		27	639		39	407
4	447		16	589		28	397		40	332
5	1,165		17	608		29	473		41	469
6	1,461		18	735		30	392		42	898
7	1,140		19	556		31	543		43	960
8	1,112		20	1,744		32	682		44	574
9	856		21	796		33	947		45	615
10	728		22	1,215		34	684		46	628
11	699		23	701		35	397			
12	622	24	1,026	36	433					

State House of Representatives										
District	Jobs		District	Jobs		District	Jobs		District	Jobs
1	148		32	275		63	209		94	153
2	141		33	200		64	53		95	144
3	123		34	193		65	201		96	445
4	92		35	94		66	182		97	33
5	93		36	141		67	274		98	211
6	48		37	175		68	293		99	215
7	148		38	302		69	1,038		100	265
8	232		39	205		70	271		101	118
9	295		40	193		71	263		102	94
10	208		41	245		72	618		103	237
11	148		42	117		73	303		104	248
12	127		43	62		74	139		105	510
13	171		44	185		75	328		106	246
14	179		45	317		76	403		107	273
15	349		46	269		77	199		108	132
16	134		47	326		78	148		109	253
17	280		48	<10		79	396		110	648
18	304		49	266		80	453		111	258
19	606		50	87		81	298		112	109
20	447		51	56		82	240		113	298
21	377		52	189		83	264		114	483
22	377		53	117		84	259		115	749
23	419		54	195		85	237		116	197
24	431		55	61		86	150		117	222
25	361		56	307		87	391		118	374
26	188		57	114		88	189		119	379
27	761		58	235		89	212		120	666
28	409		59	217		90	133		121	269
29	215		60	139		91	105		122	230
30	279		61	109		92	326		123	218
31	312	62	138	93	151	124	198			





The Building Performance Association (BPA) is a nonprofit industry association that serves as the hub for businesses, nonprofits, and government agencies working to make America's homes more energy-efficient, comfortable, healthy, and safe. Visit [www.building-performance.org](http://www.building-performance.org).



BW Research Partnership is a full-service, economic and workforce research consulting firm with offices in Carlsbad, California and Wrentham, Massachusetts. It is the nation's leading provider of accurate, comprehensive energy and clean energy research studies. Visit [www.bwresearch.com](http://www.bwresearch.com).

Data Source: Unless otherwise stated, all data are from the August 2025 U.S. Energy and Employment Report, by the U.S. Department of Energy (see Appendix B for methodology details). This methodology—adopted by the U.S. Dept. of Energy for its 2017 U.S. Energy and Employment Report, approved by the Office of Management and Budget and grounded on data collected by the Bureau of Labor Statistics—provides the broadly accepted best accounting of all U.S. energy workers.

For questions on BPA analyses, please email: [communications@building-performance.org](mailto:communications@building-performance.org).

